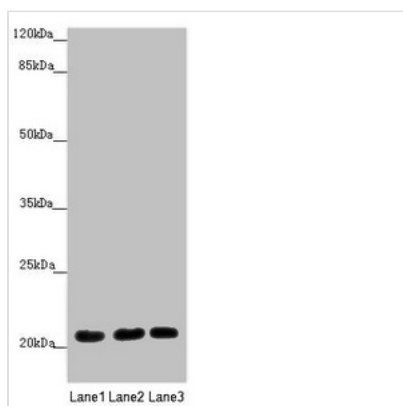




# MOCS2 Antibody

|                            |  |
|----------------------------|--|
| <b>Product Code</b>        | CSB-PA014706ESR1HU   |
| <b>Storage</b>             | Upon receipt, store at -20°C or -80°C. Avoid repeated freeze.  |
| <b>Uniprot No.</b>         | O96007   |
| <b>Immunogen</b>           | Recombinant Human Molybdopterin synthase catalytic subunit protein (1-188AA)   |
| <b>Raised In</b>           | Rabbit   |
| <b>Species Reactivity</b>  | Human  |
| <b>Tested Applications</b> | ELISA, WB, IHC, IP, IF; Recommended dilution: WB:1:1000-1:5000, IHC:1:20-1:200, IP:1:200-1:2000, IF:1:50-1:200   |
| <b>Form</b>                | Liquid   |
| <b>Conjugate</b>           | Non-conjugated   |
| <b>Storage Buffer</b>      | PBS with 0.02% sodium azide, 50% glycerol, pH7.3.  |
| <b>Purification Method</b> | Antigen Affinity Purified  |
| <b>Isotype</b>             | IgG  |
| <b>Clonality</b>           | Polyclonal   |
| <b>Alias</b>               | Molybdopterin synthase catalytic subunit (EC 2.8.1.12) (MOCO1-B) (Molybdenum cofactor synthesis protein 2 large subunit) (Molybdenum cofactor synthesis protein 2B) (MOCS2B) (Molybdopterin-synthase large subunit) (MPT synthase large subunit), MOCS2, MCBPE MOCO1 |
| <b>Immunogen Species</b>   | Homo sapiens (Human)   |
| <b>Research Area</b>       | Signal Transduction  |
| <b>Target Names</b>        | MOCS2  |

## Image



### Western blot

All lanes: MOCS2 antibody at 1.68 µg/ml

Lane 1: A549 whole cell lysate

Lane 2: HepG2 whole cell lysate

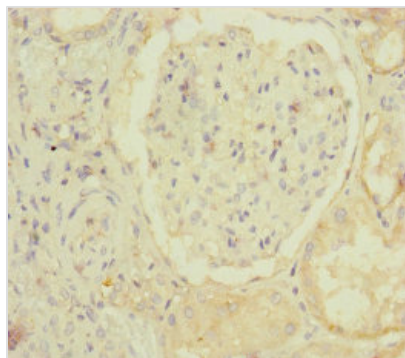
Lane 3: Jurkat whole cell lysate

Secondary

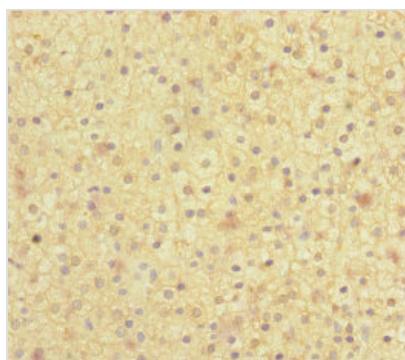
Goat polyclonal to rabbit IgG at 1/10000 dilution

Predicted band size: 21 kDa

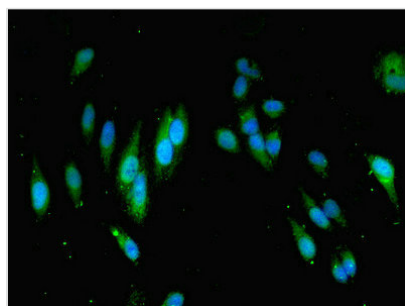
Observed band size: 21 kDa



Immunohistochemistry of paraffin-embedded human kidney tissue using CSB-PA014706ESR1HU at dilution of 1:100



Immunohistochemistry of paraffin-embedded human adrenal gland tissue using CSB-PA014706ESR1HU at dilution of 1:100



Immunofluorescent analysis of HeLa cells using CSB-PA014706ESR1HU at dilution of 1:100 and Alexa Fluor 488-conjugated AffiniPure Goat Anti-Rabbit IgG(H+L)

**Usage**

For Research Use Only. Not for use in diagnostic or therapeutic procedures.