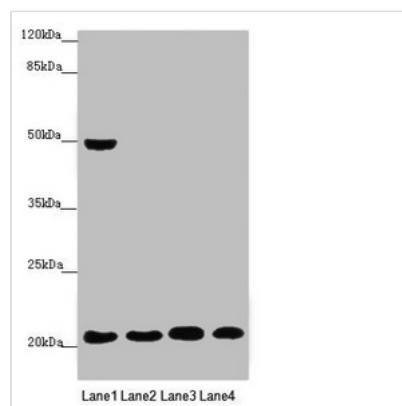




MOCS2 Antibody

Product Code	CSB-PA014706ESR2HU
Storage	Upon receipt, store at -20°C or -80°C. Avoid repeated freeze.
Uniprot No.	O96007
Immunogen	Recombinant Human Molybdopterin synthase catalytic subunit protein (1-188AA)
Raised In	Rabbit
Species Reactivity	Human
Tested Applications	ELISA, WB, IHC, IP, IF; Recommended dilution: WB:1:1000-1:5000, IHC:1:20-1:200, IP:1:200-1:2000, IF:1:50-1:200
Form	Liquid
Conjugate	Non-conjugated
Storage Buffer	PBS with 0.02% sodium azide, 50% glycerol, pH7.3.
Purification Method	Antigen Affinity Purified
Isotype	IgG
Clonality	Polyclonal
Alias	Molybdopterin synthase catalytic subunit (EC 2.8.1.12) (MOCO1-B) (Molybdenum cofactor synthesis protein 2 large subunit) (Molybdenum cofactor synthesis protein 2B) (MOCS2B) (Molybdopterin-synthase large subunit) (MPT synthase large subunit), MOCS2, MCBPE MOCO1
Immunogen Species	Homo sapiens (Human)
Research Area	Signal Transduction
Target Names	MOCS2

Image



Western blot

All lanes: MOCS2 antibody at 0.47 µg/ml

Lane 1: A549 whole cell lysate

Lane 2: HepG2 whole cell lysate

Lane 3: Jurkat whole cell lysate

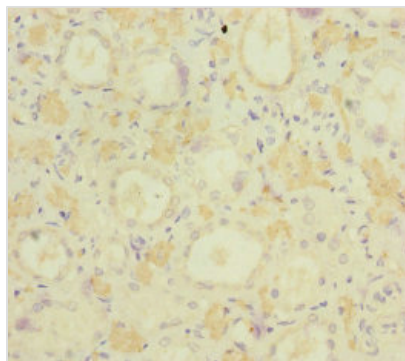
Lane 4: Hela whole cell lysate

Secondary

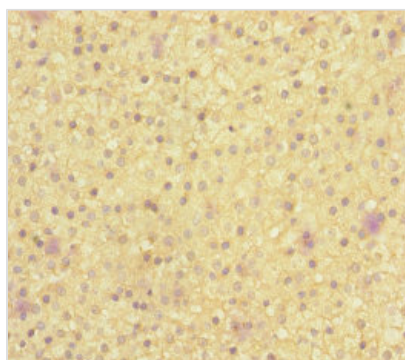
Goat polyclonal to rabbit IgG at 1/10000 dilution

Predicted band size: 21 kDa

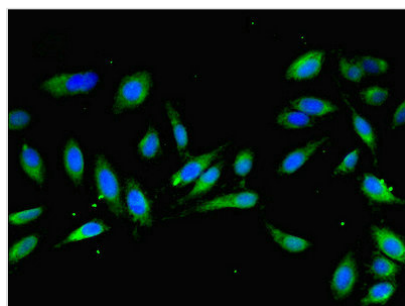
Observed band size: 21, 49 kDa



Immunohistochemistry of paraffin-embedded human kidney tissue using CSB-PA014706ESR2HU at dilution of 1:100



Immunohistochemistry of paraffin-embedded human adrenal gland tissue using CSB-PA014706ESR2HU at dilution of 1:100



Immunofluorescent analysis of Hela cells using CSB-PA014706ESR2HU at dilution of 1:100 and Alexa Fluor 488-conjugated AffiniPure Goat Anti-Rabbit IgG(H+L)

Usage

For Research Use Only. Not for use in diagnostic or therapeutic procedures.