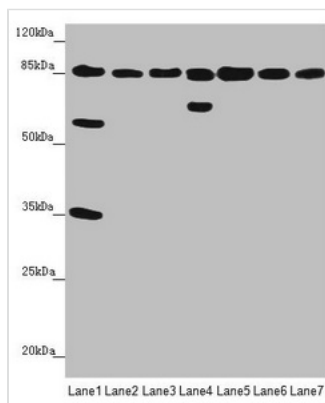




NELL1 Antibody

Product Code	CSB-PA846105ESR1HU
Storage	Upon receipt, store at -20°C or -80°C. Avoid repeated freeze.
Uniprot No.	Q92832
Immunogen	Recombinant Human Protein kinase C-binding protein NELL1 protein (160-420AA)
Raised In	Rabbit
Species Reactivity	Human, Mouse
Tested Applications	ELISA, WB, IHC; Recommended dilution: WB:1:1000-1:5000, IHC:1:20-1:200
Form	Liquid
Conjugate	Non-conjugated
Storage Buffer	PBS with 0.02% sodium azide, 50% glycerol, pH7.3.
Purification Method	Antigen Affinity Purified
Isotype	IgG
Clonality	Polyclonal
Alias	Protein kinase C-binding protein NELL1 (NEL-like protein 1) (Nel-related protein 1), NELL1, NRP1
Immunogen Species	Homo sapiens (Human)
Research Area	Signal Transduction
Target Names	NELL1

Image



Western blot

All lanes: NELL1 antibody at 3.47 µg/ml

Lane 1: Mouse liver tissue

Lane 2: Mouse kidney tissue

Lane 3: Mouse spleen tissue

Lane 4: Human placenta tissue

Lane 5: Hela whole cell lysate

Lane 6: Jurkat whole cell lysate

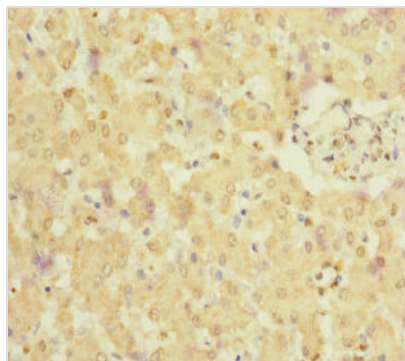
Lane 7: MCF-7 whole cell lysate

Secondary

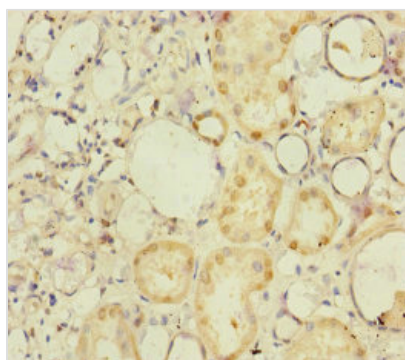
Goat polyclonal to rabbit IgG at 1/10000 dilution

Predicted band size: 90, 85 kDa

Observed band size: 90, 65, 58, 35 kDa



Immunohistochemistry of paraffin-embedded human liver tissue using CSB-PA846105ESR1HU at dilution of 1:100



Immunohistochemistry of paraffin-embedded human kidney tissue using CSB-PA846105ESR1HU at dilution of 1:100

Usage

For Research Use Only. Not for use in diagnostic or therapeutic procedures.