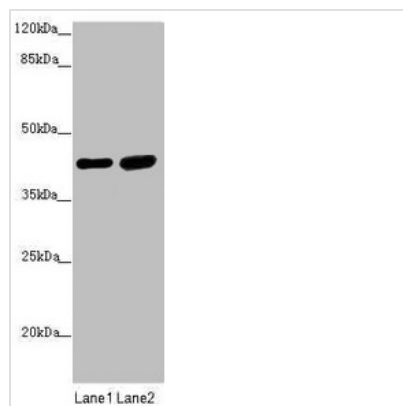




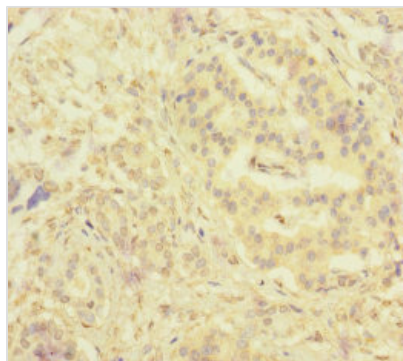
# SERPINB6 Antibody

<b>Product Code</b>	CSB-PA021074ESR2HU
<b>Storage</b>	Upon receipt, store at -20°C or -80°C. Avoid repeated freeze.
<b>Uniprot No.</b>	P35237
<b>Immunogen</b>	Recombinant Human Serpin B6 protein (180-300AA)
<b>Raised In</b>	Rabbit
<b>Species Reactivity</b>	Human
<b>Tested Applications</b>	ELISA, WB, IHC; Recommended dilution: WB:1:1000-1:5000, IHC:1:20-1:200
<b>Form</b>	Liquid
<b>Conjugate</b>	Non-conjugated
<b>Storage Buffer</b>	PBS with 0.02% sodium azide, 50% glycerol, pH7.3.
<b>Purification Method</b>	Antigen Affinity Purified
<b>Isotype</b>	IgG
<b>Clonality</b>	Polyclonal
<b>Alias</b>	Serpin B6 (Cytoplasmic antiproteinase) (CAP) (Peptidase inhibitor 6) (PI-6) (Placental thrombin inhibitor), SERPINB6, PI6 PTI
<b>Immunogen Species</b>	Homo sapiens (Human)
<b>Research Area</b>	Cell Biology
<b>Target Names</b>	SERPINB6

## Image



Western blot  
 All lanes: SERPINB6 antibody at 0.4µg/ml  
 Lane 1: Human placenta tissue  
 Lane 2: HepG2 whole cell lysate  
 Secondary  
 Goat polyclonal to rabbit IgG at 1/10000 dilution  
 Predicted band size: 43 kDa  
 Observed band size: 43 kDa



Immunohistochemistry of paraffin-embedded human pancreatic cancer using CSB-PA021074ESR2HU at dilution of 1:100