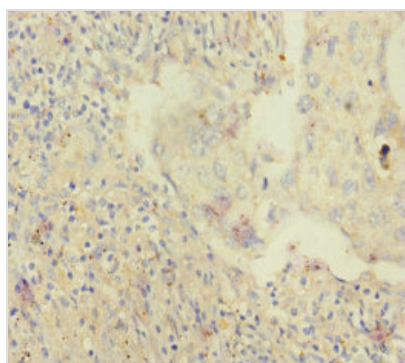




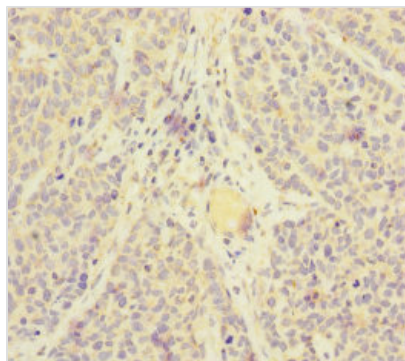
SKIV2L Antibody

Product Code	CSB-PA621875ESR2HU
Storage	Upon receipt, store at -20°C or -80°C. Avoid repeated freeze.
Uniprot No.	Q15477
Immunogen	Recombinant Human Helicase SKI2W protein (1-140AA)
Raised In	Rabbit
Species Reactivity	Human
Tested Applications	ELISA, IHC; Recommended dilution: IHC:1:20-1:200
Form	Liquid
Conjugate	Non-conjugated
Storage Buffer	PBS with 0.02% sodium azide, 50% glycerol, pH7.3.
Purification Method	Antigen Affinity Purified
Isotype	IgG
Clonality	Polyclonal
Alias	Helicase SKI2W (Ski2) (EC 3.6.4.-) (Helicase-like protein) (HLP), SKIV2L, DDX13 SKI2W SKIV2 W
Immunogen Species	Homo sapiens (Human)
Research Area	Epigenetics and Nuclear Signaling
Target Names	SKIV2L

Image



Immunohistochemistry of paraffin-embedded human lung cancer using CSB-PA621875ESR2HU at dilution of 1:100



Immunohistochemistry of paraffin-embedded human ovarian cancer using CSB-PA621875ESR2HU at dilution of 1:100

Usage

For Research Use Only. Not for use in diagnostic or therapeutic procedures.