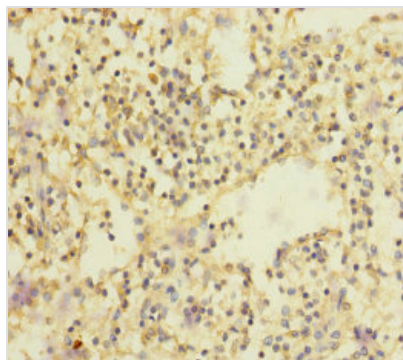




# SLC35A1 Antibody

|                            |  |
|----------------------------|--|
| <b>Product Code</b>        | CSB-PA021583ESR1HU   |
| <b>Storage</b>             | Upon receipt, store at -20°C or -80°C. Avoid repeated freeze.                                      |
| <b>Uniprot No.</b>         | P78382   |
| <b>Immunogen</b>           | Recombinant Human CMP-sialic acid transporter protein (1-100AA)                                    |
| <b>Raised In</b>           | Rabbit   |
| <b>Species Reactivity</b>  | Human  |
| <b>Tested Applications</b> | ELISA, IHC; Recommended dilution: IHC:1:20-1:200   |
| <b>Form</b>                | Liquid   |
| <b>Conjugate</b>           | Non-conjugated   |
| <b>Storage Buffer</b>      | PBS with 0.02% sodium azide, 50% glycerol, pH7.3.  |
| <b>Purification Method</b> | Antigen Affinity Purified  |
| <b>Isotype</b>             | IgG  |
| <b>Clonality</b>           | Polyclonal   |
| <b>Alias</b>               | CMP-sialic acid transporter (CMP-SA-Tr) (CMP-Sia-Tr) (Solute carrier family 35 member A1), SLC35A1 |
| <b>Immunogen Species</b>   | Homo sapiens (Human)   |
| <b>Research Area</b>       | Others   |
| <b>Target Names</b>        | SLC35A1  |

## Image



Immunohistochemistry of paraffin-embedded human spleen tissue using CSB-PA021583ESR1HU at dilution of 1:100

## Usage

For Research Use Only. Not for use in diagnostic or therapeutic procedures.