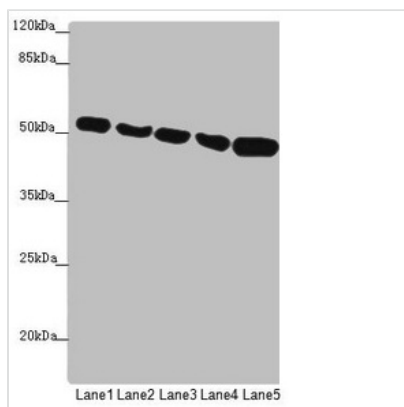




# SUCLA2 Antibody

<b>Product Code</b>	CSB-PA868398ESR1HU
<b>Storage</b>	Upon receipt, store at -20°C or -80°C. Avoid repeated freeze.
<b>Uniprot No.</b>	Q9P2R7
<b>Immunogen</b>	Recombinant Human Succinate--CoA ligase [ADP-forming] subunit beta, mitochondrial protein (1-180AA)
<b>Raised In</b>	Rabbit
<b>Species Reactivity</b>	Human
<b>Tested Applications</b>	ELISA, WB, IHC; Recommended dilution: WB:1:1000-1:5000, IHC:1:20-1:200
<b>Form</b>	Liquid
<b>Conjugate</b>	Non-conjugated
<b>Storage Buffer</b>	PBS with 0.02% sodium azide, 50% glycerol, pH7.3.
<b>Purification Method</b>	Antigen Affinity Purified
<b>Isotype</b>	IgG
<b>Clonality</b>	Polyclonal
<b>Alias</b>	Succinate--CoA ligase [ADP-forming] subunit beta, mitochondrial (EC 6.2.1.5) (ATP-specific succinyl-CoA synthetase subunit beta) (A-SCS) (Succinyl-CoA synthetase beta-A chain) (SCS-betaA), SUCLA2
<b>Immunogen Species</b>	Homo sapiens (Human)
<b>Research Area</b>	Signal Transduction
<b>Target Names</b>	SUCLA2

## Image



### Western blot

All lanes: SUCLA2 antibody at 1.75µg/ml

Lane 1: HeLa whole cell lysate

Lane 2: Jurkat whole cell lysate

Lane 3: A549 whole cell lysate

Lane 4: 293T whole cell lysate

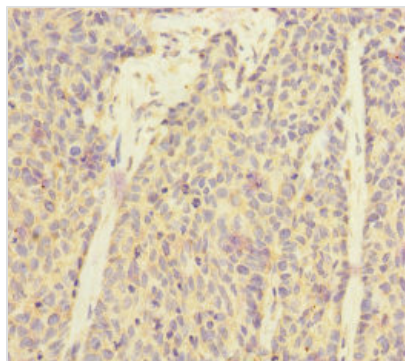
Lane 5: HepG2 whole cell lysate

Secondary

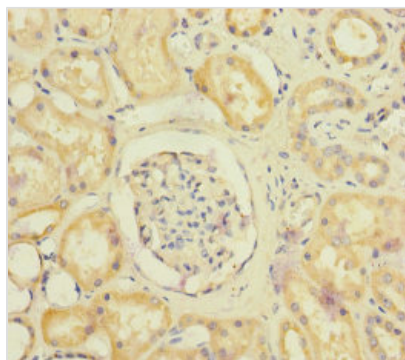
Goat polyclonal to rabbit IgG at 1/10000 dilution

Predicted band size: 51, 49 kDa

Observed band size: 51 kDa



Immunohistochemistry of paraffin-embedded human ovarian cancer using CSB-PA868398ESR1HU at dilution of 1:100



Immunohistochemistry of paraffin-embedded human kidney tissue using CSB-PA868398ESR1HU at dilution of 1:100

---

**Usage**

For Research Use Only. Not for use in diagnostic or therapeutic procedures.