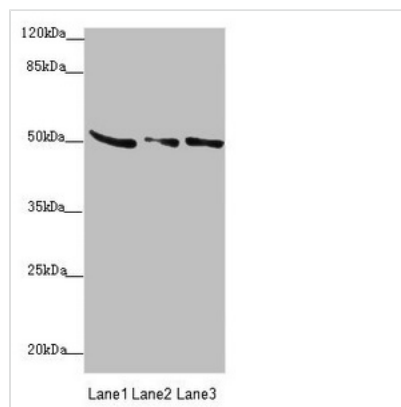




SUCLA2 Antibody

Product Code	CSB-PA868398ESR2HU
Storage	Upon receipt, store at -20°C or -80°C. Avoid repeated freeze.
Uniprot No.	Q9P2R7
Immunogen	Recombinant Human Succinate--CoA ligase [ADP-forming] subunit beta, mitochondrial protein (1-180AA)
Raised In	Rabbit
Species Reactivity	Human, Rat
Tested Applications	ELISA, WB, IHC; Recommended dilution: WB:1:1000-1:5000, IHC:1:20-1:200
Form	Liquid
Conjugate	Non-conjugated
Storage Buffer	PBS with 0.02% sodium azide, 50% glycerol, pH7.3.
Purification Method	Antigen Affinity Purified
Isotype	IgG
Clonality	Polyclonal
Alias	Succinate--CoA ligase [ADP-forming] subunit beta, mitochondrial (EC 6.2.1.5) (ATP-specific succinyl-CoA synthetase subunit beta) (A-SCS) (Succinyl-CoA synthetase beta-A chain) (SCS-betaA), SUCLA2
Immunogen Species	Homo sapiens (Human)
Research Area	Signal Transduction
Target Names	SUCLA2

Image



Western blot

All lanes: SUCLA2 antibody at 0.85µg/ml

Lane 1: Rat heart tissue

Lane 2: Hela whole cell lysate

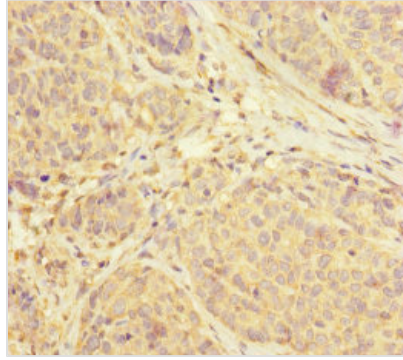
Lane 3: A549 whole cell lysate

Secondary

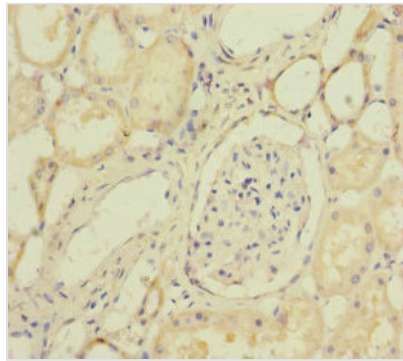
Goat polyclonal to rabbit IgG at 1/10000 dilution

Predicted band size: 51, 49 kDa

Observed band size: 51 kDa



Immunohistochemistry of paraffin-embedded human ovarian cancer using CSB-PA868398ESR2HU at dilution of 1:100



Immunohistochemistry of paraffin-embedded human kidney tissue using CSB-PA868398ESR2HU at dilution of 1:100

Usage

For Research Use Only. Not for use in diagnostic or therapeutic procedures.