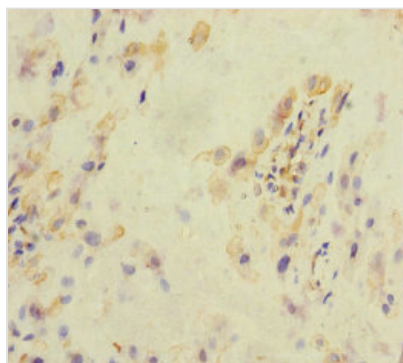




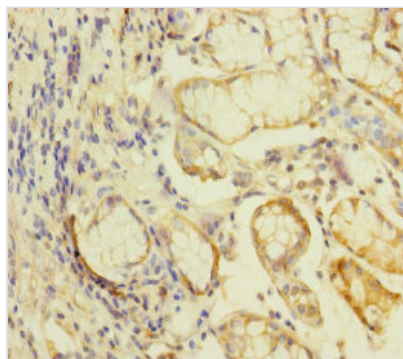
KLHL26 Antibody

Product Code	CSB-PA703614ESR1HU
Storage	Upon receipt, store at -20°C or -80°C. Avoid repeated freeze.
Uniprot No.	Q53HC5
Immunogen	Recombinant Human Kelch-like protein 26 protein (366-615AA)
Raised In	Rabbit
Species Reactivity	Human
Tested Applications	ELISA, IHC; Recommended dilution: IHC:1:20-1:200
Form	Liquid
Conjugate	Non-conjugated
Storage Buffer	PBS with 0.02% sodium azide, 50% glycerol, pH7.3.
Purification Method	Antigen Affinity Purified
Isotype	IgG
Clonality	Polyclonal
Alias	Kelch-like protein 26, KLHL26
Immunogen Species	Homo sapiens (Human)
Research Area	Cell Biology
Target Names	KLHL26

Image



Immunohistochemistry of paraffin-embedded human placenta tissue using CSB-PA703614ESR1HU at dilution of 1:100



Immunohistochemistry of paraffin-embedded human gastric cancer using CSB-PA703614ESR1HU at dilution of 1:100