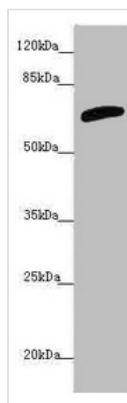




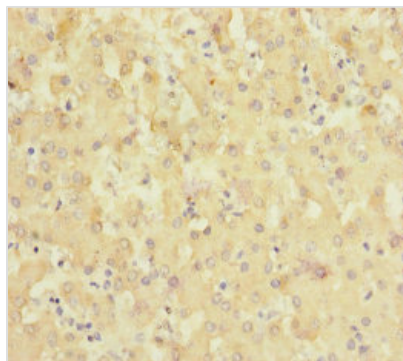
SLC6A12 Antibody

Product Code	CSB-PA021690ESR1HU
Storage	Upon receipt, store at -20°C or -80°C. Avoid repeated freeze.
Uniprot No.	P48065
Immunogen	Recombinant Human Sodium- and chloride-dependent betaine transporter protein (515-614AA)
Raised In	Rabbit
Species Reactivity	Human
Tested Applications	ELISA, WB, IHC; Recommended dilution: WB:1:1000-1:5000, IHC:1:20-1:200
Form	Liquid
Conjugate	Non-conjugated
Storage Buffer	PBS with 0.02% sodium azide, 50% glycerol, pH7.3.
Purification Method	Antigen Affinity Purified
Isotype	IgG
Clonality	Polyclonal
Alias	Sodium- and chloride-dependent betaine transporter (BGT-1) (Na ⁺)/Cl ⁻ betaine/GABA transporter) (Solute carrier family 6 member 12), SLC6A12
Immunogen Species	Homo sapiens (Human)
Research Area	Neuroscience
Target Names	SLC6A12

Image



Western blot
 All lanes: SLC6A12 antibody at 4.47µg/ml +
 PC-3 whole cell lysate
 Secondary
 Goat polyclonal to rabbit IgG at 1/10000 dilution
 Predicted band size: 70 kDa
 Observed band size: 70 kDa



Immunohistochemistry of paraffin-embedded human liver tissue using CSB-PA021690ESR1HU at dilution of 1:100