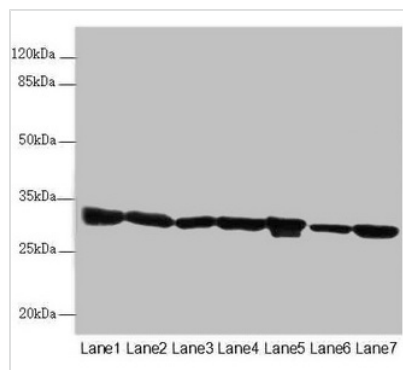




ECHS1 Antibody

Product Code	CSB-PA007382ESR1HU
Storage	Upon receipt, store at -20°C or -80°C. Avoid repeated freeze.
Uniprot No.	P30084
Immunogen	Recombinant Human Enoyl-CoA hydratase, mitochondrial protein (28-290AA)
Raised In	Rabbit
Species Reactivity	Human, Mouse
Tested Applications	ELISA, WB, IHC; Recommended dilution: WB:1:1000-1:5000, IHC:1:20-1:200
Form	Liquid
Conjugate	Non-conjugated
Storage Buffer	PBS with 0.02% sodium azide, 50% glycerol, pH7.3.
Purification Method	Antigen Affinity Purified
Isotype	IgG
Clonality	Polyclonal
Alias	Enoyl-CoA hydratase, mitochondrial (EC 4.2.1.17) (Enoyl-CoA hydratase 1) (Short-chain enoyl-CoA hydratase) (SCEH), ECHS1
Immunogen Species	Homo sapiens (Human)
Research Area	Tags & Cell Markers
Target Names	ECHS1

Image



Western blot

All lanes: ECHS1 antibody at 3.03µg/ml

Lane 1: Mouse liver tissue

Lane 2: Mouse skeletal muscle tissue

Lane 3: Hela whole cell lysate

Lane 4: HepG2 whole cell lysate

Lane 5: MCF-7 whole cell lysate

Lane 6: Jurkat whole cell lysate

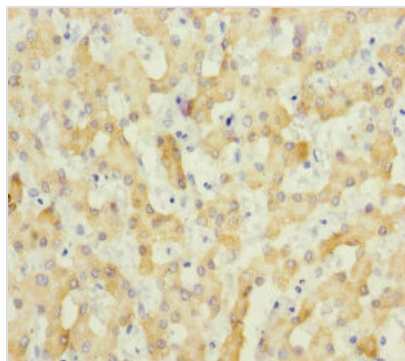
Lane 7: A549 whole cell lysate

Secondary

Goat polyclonal to rabbit IgG at 1/10000 dilution

Predicted band size: 32 kDa

Observed band size: 32 kDa



Immunohistochemistry of paraffin-embedded human liver tissue using CSB-PA007382ESR1HU at dilution of 1:100

Usage

For Research Use Only. Not for use in diagnostic or therapeutic procedures.