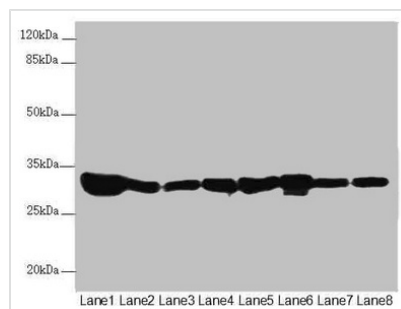




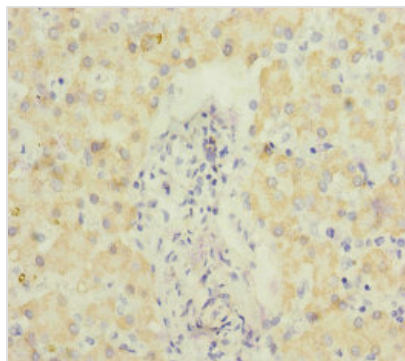
# ECHS1 Antibody

<b>Product Code</b>	CSB-PA007382ESR2HU
<b>Storage</b>	Upon receipt, store at -20°C or -80°C. Avoid repeated freeze.
<b>Uniprot No.</b>	P30084
<b>Immunogen</b>	Recombinant Human Enoyl-CoA hydratase, mitochondrial protein (28-290AA)
<b>Raised In</b>	Rabbit
<b>Species Reactivity</b>	Human, Mouse, Rat
<b>Tested Applications</b>	ELISA, WB, IHC; Recommended dilution: WB:1:1000-1:5000, IHC:1:20-1:200
<b>Form</b>	Liquid
<b>Conjugate</b>	Non-conjugated
<b>Storage Buffer</b>	PBS with 0.02% sodium azide, 50% glycerol, pH7.3.
<b>Purification Method</b>	Antigen Affinity Purified
<b>Isotype</b>	IgG
<b>Clonality</b>	Polyclonal
<b>Alias</b>	Enoyl-CoA hydratase, mitochondrial (EC 4.2.1.17) (Enoyl-CoA hydratase 1) (Short-chain enoyl-CoA hydratase) (SCEH), ECHS1
<b>Immunogen Species</b>	Homo sapiens (Human)
<b>Research Area</b>	Tags & Cell Markers
<b>Target Names</b>	ECHS1

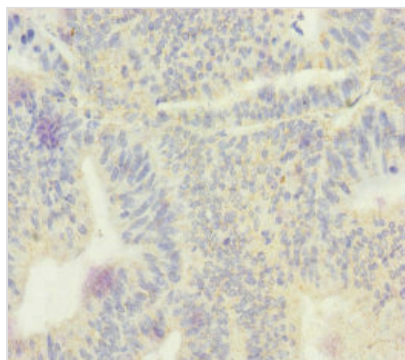
## Image



Western blot  
 All lanes: ECHS1 antibody at 3.55µg/ml  
 Lane 1: Rat heart tissue  
 Lane 2: Mouse liver tissue  
 Lane 3: Mouse skeletal muscle tissue  
 Lane 4: HeLa whole cell lysate  
 Lane 5: HepG2 whole cell lysate  
 Lane 6: MCF-7 whole cell lysate  
 Lane 7: Jurkat whole cell lysate  
 Lane 8: A549 whole cell lysate  
 Secondary  
 Goat polyclonal to rabbit IgG at 1/10000 dilution  
 Predicted band size: 32 kDa  
 Observed band size: 32 kDa



Immunohistochemistry of paraffin-embedded human liver tissue using CSB-PA007382ESR2HU at dilution of 1:100



Immunohistochemistry of paraffin-embedded human colon cancer using CSB-PA007382ESR2HU at dilution of 1:100

---

**Usage**

For Research Use Only. Not for use in diagnostic or therapeutic procedures.