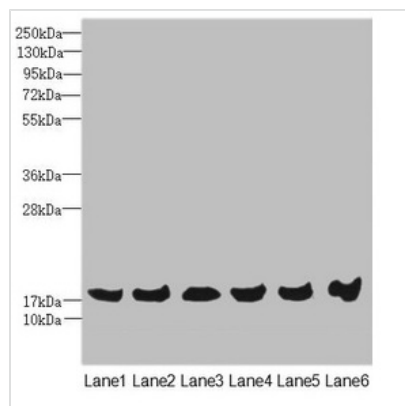




MAGOH Antibody

Product Code	CSB-PA013364ESR1HU
Storage	Upon receipt, store at -20°C or -80°C. Avoid repeated freeze.
Uniprot No.	P61326
Immunogen	Recombinant Human Protein mago nashi homolog protein (1-146AA)
Raised In	Rabbit
Species Reactivity	Human, Mouse
Tested Applications	ELISA, WB, IHC, IP; Recommended dilution: WB:1:1000-1:5000, IHC:1:20-1:200, IP:1:200-1:2000
Form	Liquid
Conjugate	Non-conjugated
Storage Buffer	PBS with 0.02% sodium azide, 50% glycerol, pH7.3.
Purification Method	Antigen Affinity Purified
Isotype	IgG
Clonality	Polyclonal
Alias	Protein mago nashi homolog, MAGOH, MAGOHA
Immunogen Species	Homo sapiens (Human)
Research Area	Epigenetics and Nuclear Signaling
Target Names	MAGOH

Image



Western blot

All lanes: MAGOH antibody at 4.69µg/ml

Lane 1: Mouse kidney tissue

Lane 2: A431 whole cell lysate

Lane 3: Jurkat whole cell lysate

Lane 4: Raji whole cell lysate

Lane 5: K562 whole cell lysate

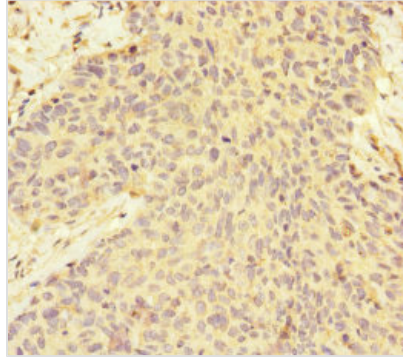
Lane 6: HeLa whole cell lysate

Secondary

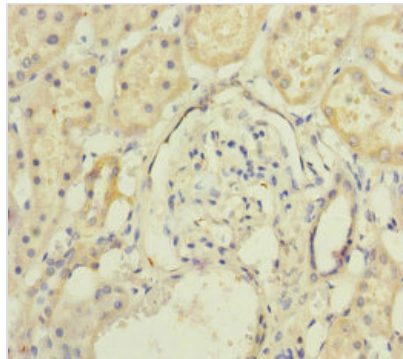
Goat polyclonal to rabbit IgG at 1/10000 dilution

Predicted band size: 18, 13 kDa

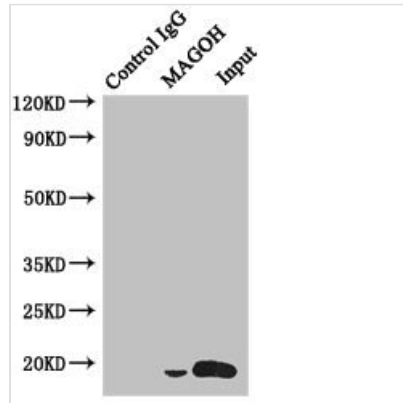
Observed band size: 18 kDa



Immunohistochemistry of paraffin-embedded human ovarian cancer using CSB-PA013364ESR1HU at dilution of 1:100



Immunohistochemistry of paraffin-embedded human kidney tissue using CSB-PA013364ESR1HU at dilution of 1:100



Immunoprecipitating MAGOH in HeLa whole cell lysate

Lane 1: Rabbit control IgG instead of (1µg) instead of CSB-PA013364ESR1HU in HeLa whole cell lysate. For western blotting, a HRP-conjugated anti-rabbit IgG, specific to the non-reduced form of IgG was used as the Secondary antibody (1/50000)

Lane 2: CSB-PA013364ESR1HU (4µg) + HeLa whole cell lysate (500µg)

Lane 3: HeLa whole cell lysate (20µg)

Usage

For Research Use Only. Not for use in diagnostic or therapeutic procedures.