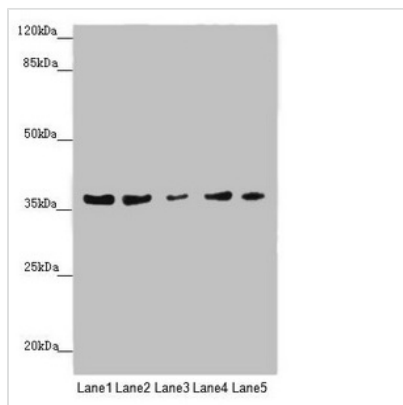




MTHFD2 Antibody

Product Code	CSB-PA015156ESR1HU
Storage	Upon receipt, store at -20°C or -80°C. Avoid repeated freeze.
Uniprot No.	P13995
Immunogen	Recombinant Human Bifunctional methylenetetrahydrofolate dehydrogenase/cyclohydrolase, mitochondrial protein (40-250AA)
Raised In	Rabbit
Species Reactivity	Human
Tested Applications	ELISA, WB, IHC; Recommended dilution: WB:1:1000-1:5000, IHC:1:20-1:200
Form	Liquid
Conjugate	Non-conjugated
Storage Buffer	PBS with 0.02% sodium azide, 50% glycerol, pH7.3.
Purification Method	Antigen Affinity Purified
Isotype	IgG
Clonality	Polyclonal
Alias	Bifunctional methylenetetrahydrofolate dehydrogenase/cyclohydrolase, mitochondrial [Includes: NAD-dependent methylenetetrahydrofolate dehydrogenase (EC 1.5.1.15); Methenyltetrahydrofolate cyclohydrolase (EC 3.5.4.9)], MTHFD2, NMDMC
Immunogen Species	Homo sapiens (Human)
Research Area	Signal Transduction
Target Names	MTHFD2

Image



Western blot

All lanes: MTHFD2 antibody at 4.99µg/ml

Lane 1: 293 whole cell lysate

Lane 2: A431 whole cell lysate

Lane 3: HepG2 whole cell lysate

Lane 4: Hela whole cell lysate

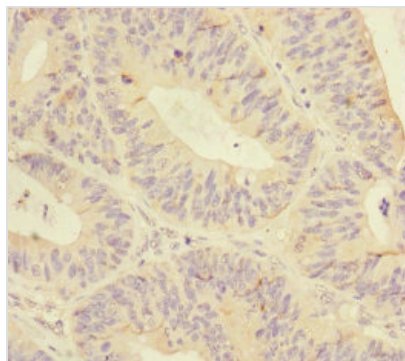
Lane 5: K562 whole cell lysate

Secondary

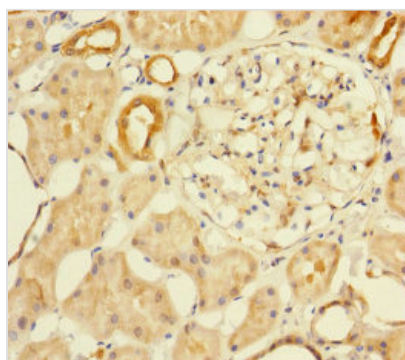
Goat polyclonal to rabbit IgG at 1/10000 dilution

Predicted band size: 38, 27 kDa

Observed band size: 38 kDa



Immunohistochemistry of paraffin-embedded human colon cancer using CSB-PA015156ESR1HU at dilution of 1:100



Immunohistochemistry of paraffin-embedded human kidney tissue using CSB-PA015156ESR1HU at dilution of 1:100

Usage

For Research Use Only. Not for use in diagnostic or therapeutic procedures.