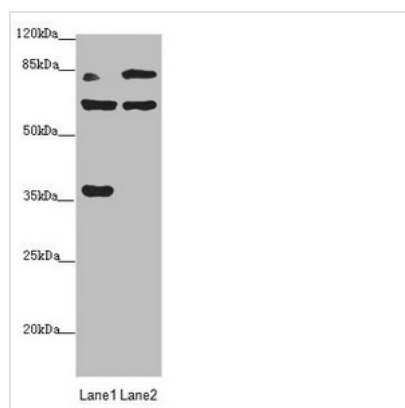


MTO1 Antibody

Product Code	CSB-PA846064ESR2HU
Storage	Upon receipt, store at -20°C or -80°C. Avoid repeated freeze.
Uniprot No.	Q9Y2Z2
Immunogen	Recombinant Human Protein MTO1 homolog, mitochondrial protein (420-680AA)
Raised In	Rabbit
Species Reactivity	Human, Rat
Tested Applications	ELISA, WB, IHC; Recommended dilution: WB:1:1000-1:5000, IHC:1:20-1:200
Form	Liquid
Conjugate	Non-conjugated
Storage Buffer	PBS with 0.02% sodium azide, 50% glycerol, pH7.3.
Purification Method	Antigen Affinity Purified
Isotype	IgG
Clonality	Polyclonal
Alias	Protein MTO1 homolog, mitochondrial, MTO1
Immunogen Species	Homo sapiens (Human)
Research Area	Others
Target Names	MTO1

Image



Western blot

All lanes: MTO1 antibody at 2.25µg/ml

Lane 1: Rat heart tissue

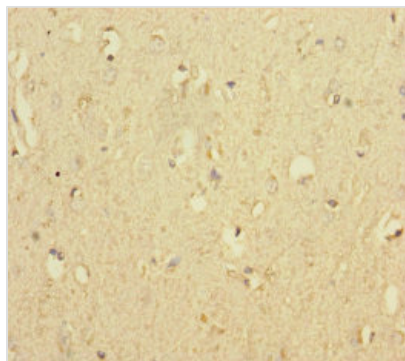
Lane 2: Jurkat whole cell lysate

Secondary

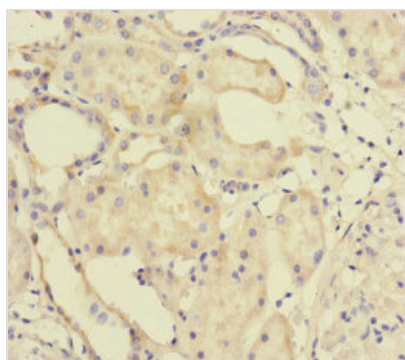
Goat polyclonal to rabbit IgG at 1/10000 dilution

Predicted band size: 80, 67, 35, 78, 73, 82 kDa

Observed band size: 80, 67, 35 kDa



Immunohistochemistry of paraffin-embedded human brain tissue using CSB-PA846064ESR2HU at dilution of 1:100



Immunohistochemistry of paraffin-embedded human kidney tissue using CSB-PA846064ESR2HU at dilution of 1:100