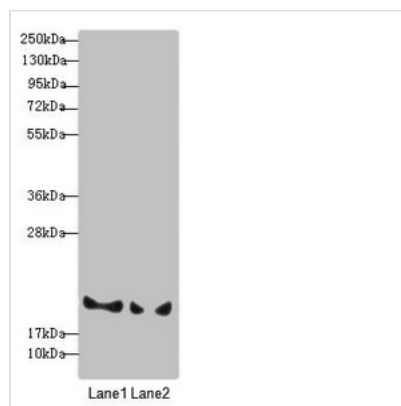




BLOC1S6 Antibody

| | |
|----------------------------|--|
| Product Code | CSB-PA890745DSR2HU |
| Storage | Upon receipt, store at -20°C or -80°C. Avoid repeated freeze. |
| Uniprot No. | Q9UL45 |
| Immunogen | Recombinant Human Biogenesis of lysosome-related organelles complex 1 subunit 6 protein (1-170AA) |
| Raised In | Rabbit |
| Species Reactivity | Human |
| Tested Applications | ELISA, WB, IHC, IP; Recommended dilution: WB:1:1000-1:5000, IHC:1:20-1:200, IP:1:200-1:2000 |
| Form | Liquid |
| Conjugate | Non-conjugated |
| Storage Buffer | PBS with 0.02% sodium azide, 50% glycerol, pH7.3. |
| Purification Method | Antigen Affinity Purified |
| Isotype | IgG |
| Clonality | Polyclonal |
| Alias | Biogenesis of lysosome-related organelles complex 1 subunit 6 (BLOC-1 subunit 6) (Pallid protein homolog) (Pallidin) (Syntaxin 13-interacting protein), BLOC1S6, PA PLDN |
| Immunogen Species | Homo sapiens (Human) |
| Research Area | Signal Transduction |
| Target Names | BLOC1S6 |

Image



Western blot

All lanes: BLOC1S6 antibody at 3.33µg/ml

Lane 1: A431 whole cell lysate

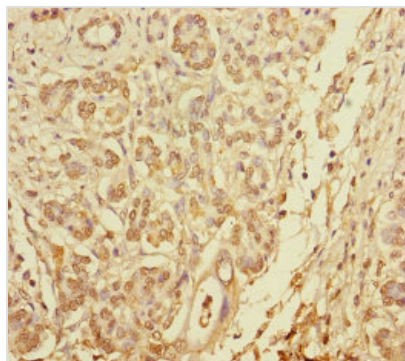
Lane 2: 293T whole cell lysate

Secondary

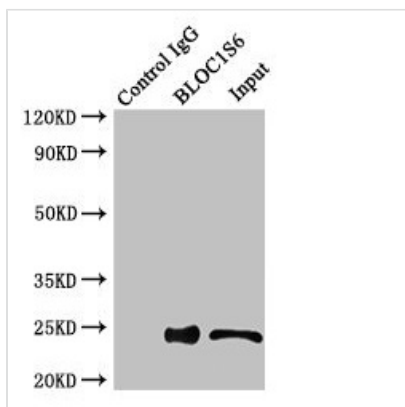
Goat polyclonal to rabbit IgG at 1/10000 dilution

Predicted band size: 20, 9 kDa

Observed band size: 20 kDa



Immunohistochemistry of paraffin-embedded human pancreatic cancer using CSB-PA890745DSR2HU at dilution of 1:100



Immunoprecipitating BLOC1S6 in HEK293 whole cell lysate

Lane 1: Rabbit control IgG instead of (1µg) instead of CSB-PA890745DSR2HU in HEK293 whole cell lysate. For western blotting, a HRP-conjugated anti-rabbit IgG, specific to the non-reduced form of IgG was used as the Secondary antibody (1/50000)

Lane 2: CSB-PA890745DSR2HU (4µg) + HEK293 whole cell lysate (500µg)

Lane 3: HEK293 whole cell lysate (20µg)

Usage

For Research Use Only. Not for use in diagnostic or therapeutic procedures.