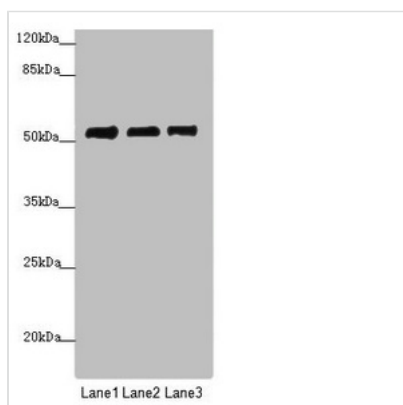




# PRPF4 Antibody

<b>Product Code</b>	CSB-PA018768ESR2HU
<b>Storage</b>	Upon receipt, store at -20°C or -80°C. Avoid repeated freeze.
<b>Uniprot No.</b>	O43172
<b>Immunogen</b>	Recombinant Human U4/U6 small nuclear ribonucleoprotein Prp4 protein (1-260AA)
<b>Raised In</b>	Rabbit
<b>Species Reactivity</b>	Human
<b>Tested Applications</b>	ELISA, WB, IHC; Recommended dilution: WB:1:1000-1:5000, IHC:1:20-1:200
<b>Form</b>	Liquid
<b>Conjugate</b>	Non-conjugated
<b>Storage Buffer</b>	PBS with 0.02% sodium azide, 50% glycerol, pH7.3.
<b>Purification Method</b>	Antigen Affinity Purified
<b>Isotype</b>	IgG
<b>Clonality</b>	Polyclonal
<b>Alias</b>	U4/U6 small nuclear ribonucleoprotein Prp4 (PRP4 homolog) (hPrp4) (U4/U6 snRNP 60 kDa protein) (WD splicing factor Prp4), PRPF4, PRP4
<b>Immunogen Species</b>	Homo sapiens (Human)
<b>Research Area</b>	Cell Biology
<b>Target Names</b>	PRPF4

## Image



### Western blot

All lanes: PRPF4 antibody at 3.89 µg/ml

Lane 1: Jurkat whole cell lysate

Lane 2: HeLa whole cell lysate

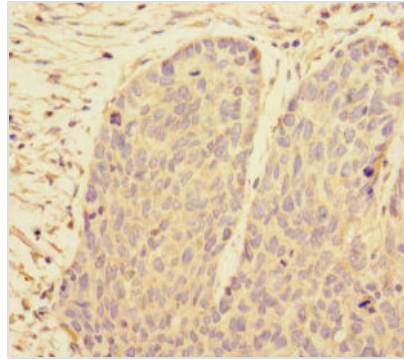
Lane 3: HepG2 whole cell lysate

Secondary

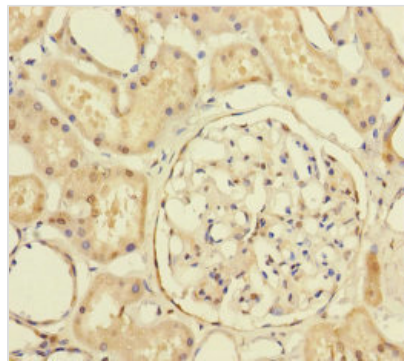
Goat polyclonal to rabbit IgG at 1/10000 dilution

Predicted band size: 58 kDa

Observed band size: 58 kDa



Immunohistochemistry of paraffin-embedded human ovarian cancer using CSB-PA018768ESR2HU at dilution of 1:100



Immunohistochemistry of paraffin-embedded human kidney tissue using CSB-PA018768ESR2HU at dilution of 1:100

---

**Usage**

For Research Use Only. Not for use in diagnostic or therapeutic procedures.