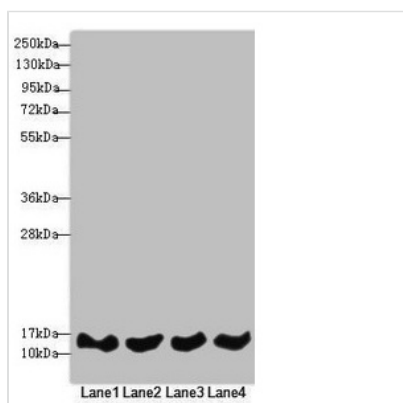




REEP5 Antibody

Product Code	CSB-PA723351ESR2HU
Storage	Upon receipt, store at -20°C or -80°C. Avoid repeated freeze.
Uniprot No.	Q00765
Immunogen	Recombinant Human Receptor expression-enhancing protein 5 protein (120-189AA)
Raised In	Rabbit
Species Reactivity	Human
Tested Applications	ELISA, WB, IHC; Recommended dilution: WB:1:1000-1:5000, IHC:1:20-1:200
Form	Liquid
Conjugate	Non-conjugated
Storage Buffer	PBS with 0.02% sodium azide, 50% glycerol, pH7.3.
Purification Method	Antigen Affinity Purified
Isotype	IgG
Clonality	Polyclonal
Alias	Receptor expression-enhancing protein 5 (Polyposis locus protein 1) (Protein TB2), REEP5, C5orf18 DP1 TB2
Immunogen Species	Homo sapiens (Human)
Research Area	Neuroscience
Target Names	REEP5

Image



Western blot

All lanes: REEP5 antibody at 4.56µg/ml

Lane 1: Jurkat whole cell lysate

Lane 2: MCF-7 whole cell lysate

Lane 3: K562 whole cell lysate

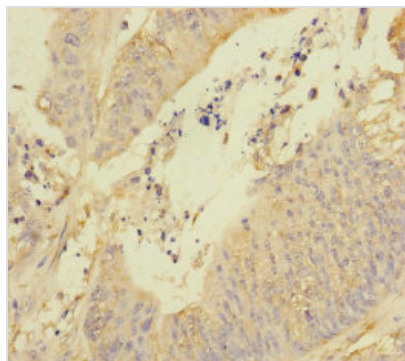
Lane 4: HeLa whole cell lysate

Secondary

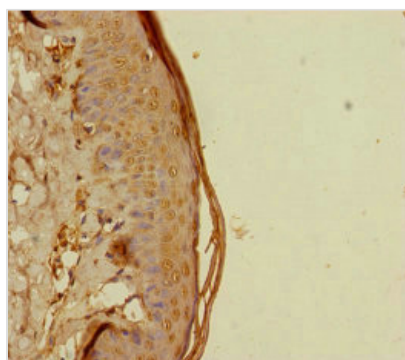
Goat polyclonal to rabbit IgG at 1/10000 dilution

Predicted band size: 22, 15 kDa

Observed band size: 15 kDa



Immunohistochemistry of paraffin-embedded human colon cancer using CSB-PA723351ESR2HU at dilution of 1:100



Immunohistochemistry of paraffin-embedded human skin tissue using CSB-PA723351ESR2HU at dilution of 1:100

Usage

For Research Use Only. Not for use in diagnostic or therapeutic procedures.