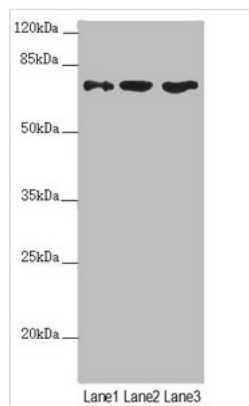




SCFD1 Antibody

Product Code	CSB-PA840987ESR1HU
Storage	Upon receipt, store at -20°C or -80°C. Avoid repeated freeze.
Uniprot No.	Q8WVM8
Immunogen	Recombinant Human Sec1 family domain-containing protein 1 protein (373-642AA)
Raised In	Rabbit
Species Reactivity	Human, Mouse
Tested Applications	ELISA, WB, IHC; Recommended dilution: WB:1:1000-1:5000, IHC:1:20-1:200
Form	Liquid
Conjugate	Non-conjugated
Storage Buffer	PBS with 0.02% sodium azide, 50% glycerol, pH7.3.
Purification Method	Antigen Affinity Purified
Isotype	IgG
Clonality	Polyclonal
Alias	Sec1 family domain-containing protein 1 (SLY1 homolog) (Sly1p) (Syntaxin-binding protein 1-like 2), SCFD1, C14orf163 KIAA0917 STXBP1L2
Immunogen Species	Homo sapiens (Human)
Research Area	Signal Transduction
Target Names	SCFD1

Image



Western blot

All lanes: SCFD1 antibody at 4.48µg/ml

Lane 1: Mouse liver tissue

Lane 2: Hela whole cell lysate

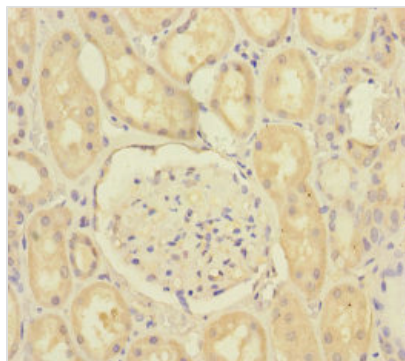
Lane 3: A549 whole cell lysate

Secondary

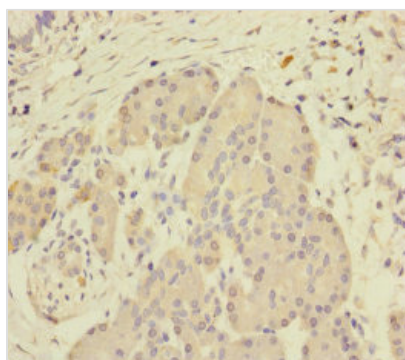
Goat polyclonal to rabbit IgG at 1/10000 dilution

Predicted band size: 73, 63, 66 kDa

Observed band size: 73 kDa



Immunohistochemistry of paraffin-embedded human kidney tissue using CSB-PA840987ESR1HU at dilution of 1:100



Immunohistochemistry of paraffin-embedded human pancreatic tissue using CSB-PA840987ESR1HU at dilution of 1:100