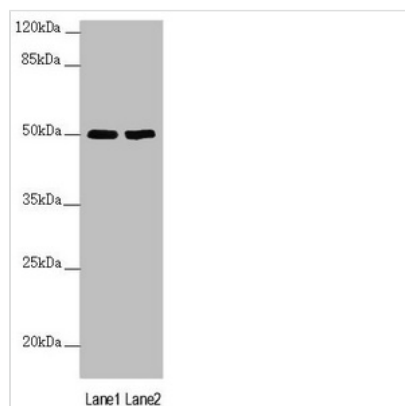




# SLC39A7 Antibody

<b>Product Code</b>	CSB-PA835673ESR2HU
<b>Storage</b>	Upon receipt, store at -20°C or -80°C. Avoid repeated freeze.
<b>Uniprot No.</b>	Q92504
<b>Immunogen</b>	Recombinant Human Zinc transporter SLC39A7 protein (235-380AA)
<b>Raised In</b>	Rabbit
<b>Species Reactivity</b>	Human
<b>Tested Applications</b>	ELISA, WB, IHC; Recommended dilution: WB:1:1000-1:5000, IHC:1:20-1:200
<b>Form</b>	Liquid
<b>Conjugate</b>	Non-conjugated
<b>Storage Buffer</b>	PBS with 0.02% sodium azide, 50% glycerol, pH7.3.
<b>Purification Method</b>	Antigen Affinity Purified
<b>Isotype</b>	IgG
<b>Clonality</b>	Polyclonal
<b>Alias</b>	Zinc transporter SLC39A7 (Histidine-rich membrane protein Ke4) (Really interesting new gene 5 protein) (Solute carrier family 39 member 7) (Zrt-, Irt-like protein 7) (ZIP7), SLC39A7, HKE4 RING5
<b>Immunogen Species</b>	Homo sapiens (Human)
<b>Research Area</b>	Signal Transduction
<b>Target Names</b>	SLC39A7

## Image



### Western blot

All lanes: SLC39A7 antibody at 3.59µg/ml

Lane 1: MCF-7 whole cell lysate

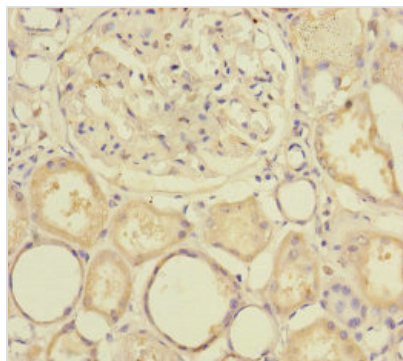
Lane 2: HepG2 whole cell lysate

Secondary

Goat polyclonal to rabbit IgG at 1/10000 dilution

Predicted band size: 51 kDa

Observed band size: 51 kDa



Immunohistochemistry of paraffin-embedded human kidney tissue using CSB-PA835673ESR2HU at dilution of 1:100