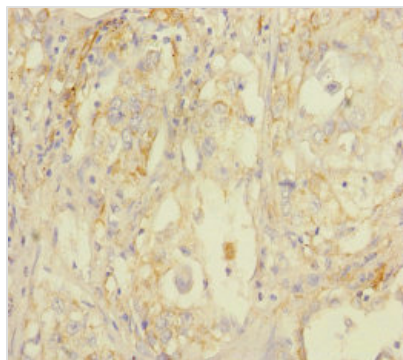




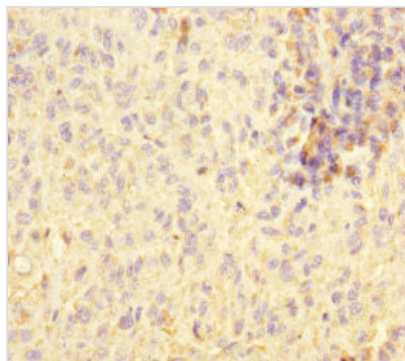
STOML2 Antibody

Product Code	CSB-PA892131ESR1HU
Storage	Upon receipt, store at -20°C or -80°C. Avoid repeated freeze.
Uniprot No.	Q9UJZ1
Immunogen	Recombinant Human Stomatin-like protein 2, mitochondrial protein (29-356AA)
Raised In	Rabbit
Species Reactivity	Human
Tested Applications	ELISA, IHC; Recommended dilution: IHC:1:20-1:200
Form	Liquid
Conjugate	Non-conjugated
Storage Buffer	PBS with 0.02% sodium azide, 50% glycerol, pH7.3.
Purification Method	Antigen Affinity Purified
Isotype	IgG
Clonality	Polyclonal
Alias	Stomatin-like protein 2, mitochondrial (SLP-2) (EPB72-like protein 2) (Paraprotein target 7) (Paratarg-7), STOML2, SLP2
Immunogen Species	Homo sapiens (Human)
Research Area	Cancer
Target Names	STOML2

Image



Immunohistochemistry of paraffin-embedded human lung cancer using CSB-PA892131ESR1HU at dilution of 1:100



Immunohistochemistry of paraffin-embedded human melanoma using CSB-PA892131ESR1HU at dilution of 1:100