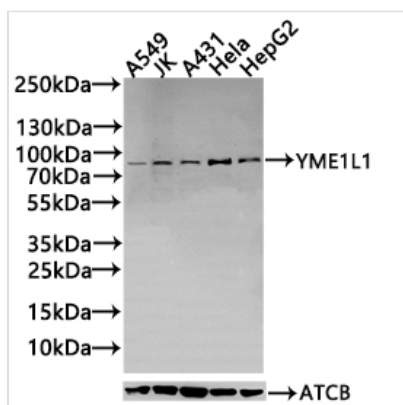




YME1L1 Antibody

Product Code	CSB-PA853509ESR2HU
Storage	Upon receipt, store at -20°C or -80°C. Avoid repeated freeze.
Uniprot No.	Q96TA2
Immunogen	Recombinant Human ATP-dependent zinc metalloprotease YME1L1 protein (1-240AA)
Raised In	Rabbit
Species Reactivity	Human
Tested Applications	ELISA, WB; Recommended dilution: WB:1:500-1:2000
Form	Liquid
Conjugate	Non-conjugated
Storage Buffer	:Preservative: 0.03% Proclin 300 Constituents: 50% Glycerol, 0.01M PBS, pH 7.4
Purification Method	Antigen Affinity Purified
Isotype	IgG
Clonality	Polyclonal
Product Type	Polyclonal Antibody
Immunogen Species	Homo sapiens (Human)
Research Area	Signal Transduction
Target Names	YME1L1

Image



Western Blot

Positive WB detected in: A549 whole cell lysate(30µg), JK whole cell lysate(30µg), A431 whole cell lysate(30µg), HeLa whole cell lysate(30µg), HepG2 whole cell lysate(30µg)
All lanes: YME1L1 antibody at 1:1000

Secondary

Goat polyclonal to rabbit IgG at 1/20000 dilution
Predicted band size: 87,80,76 kDa
Observed band size: 87 kDa
Exposure time: 120s

Usage

For Research Use Only. Not for use in diagnostic or therapeutic procedures.