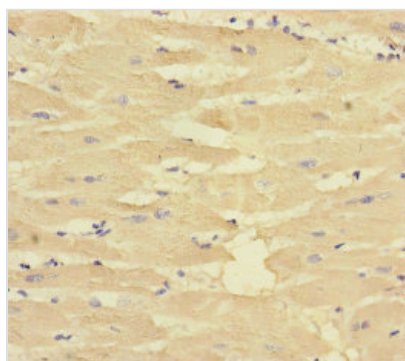




CORIN Antibody

Product Code	CSB-PA896913ESR2HU
Storage	Upon receipt, store at -20°C or -80°C. Avoid repeated freeze.
Uniprot No.	Q9Y5Q5
Immunogen	Recombinant Human Atrial natriuretic peptide-converting enzyme protein (1-110AA)
Raised In	Rabbit
Species Reactivity	Human
Tested Applications	ELISA, IHC; Recommended dilution: IHC:1:20-1:200
Form	Liquid
Conjugate	Non-conjugated
Storage Buffer	PBS with 0.02% sodium azide, 50% glycerol, pH7.3.
Purification Method	Antigen Affinity Purified
Isotype	IgG
Clonality	Polyclonal
Alias	Atrial natriuretic peptide-converting enzyme (EC 3.4.21.-) (Corin) (Heart-specific serine proteinase ATC2) (Pro-ANP-converting enzyme) (Transmembrane protease serine 10) [Cleaved into: Atrial natriuretic peptide-converting enzyme, N-terminal propeptide; Atrial natriuretic peptide-converting enzyme, activated protease fragment; Atrial natriuretic peptide-converting enzyme, 180 kDa soluble fragment; Atrial natriuretic peptide-converting enzyme, 160 kDa soluble fragment; Atrial natriuretic peptide-converting enzyme, 100 kDa soluble fragment], CORIN, CRN Tmprss10
Immunogen Species	Homo sapiens (Human)
Research Area	Cell Biology
Target Names	CORIN

Image



Immunohistochemistry of paraffin-embedded human heart tissue using CSB-PA896913ESR2HU at dilution of 1:100

Usage For Research Use Only. Not for use in diagnostic or therapeutic procedures.