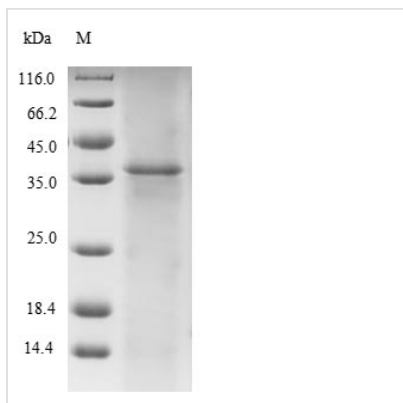




# Recombinant Human Titin (TTN), partial

<b>Product Code</b>	CSB-EP025267HU
<b>Relevance</b>	Key component in the assembly and functioning of vertebrate striated muscles. By providing connections at the level of individual microfilaments, it contributes to the fine balance of forces between the two halves of the sarcomere. The size and extensibility of the cross-links are the main determinants of sarcomere extensibility properties of muscle. In non-muscle cells, seems to play a role in chromosome condensation and chromosome segregation during mitosis. Might link the lamina network to chromatin or nuclear actin, or both during interphase.
<b>Abbreviation</b>	Recombinant Human TTN protein, partial
<b>Storage</b>	The shelf life is related to many factors, storage state, buffer ingredients, storage temperature and the stability of the protein itself. Generally, the shelf life of liquid form is 6 months at -20°C/-80°C. The shelf life of lyophilized form is 12 months at -20°C/-80°C.
<b>Uniprot No.</b>	Q8WZ42
<b>Product Type</b>	Recombinant Protein
<b>Immunogen Species</b>	Homo sapiens (Human)
<b>Purity</b>	≥ 85% as determined by SDS-PAGE.
<b>Sequence</b>	RCEEGKDNWIRCNMKLVPETYKVTGLEKGNKYLYRVSAENKAGVSDPSEILG PLTADDAFVEPTMDLSAFKDGLEVIVPNPITILVPSTGYPRPTATWCFGDKVLE TGDRVKMKTL SAYAELVISPERSDKGIYTLKLENRVKTISGEIDVNV IARPSAP KELKFGDITKDSVHLTWEPD DGG SPLTGYVVEKREVS RKTWTKVMDFVTD LEFTVPDLVQGKEYL FKVCARNKCGPGEPAYVDEPVNMSTPATVPDPPENVK WRDRTANSIFLTWDPPKNDGG
<b>Research Area</b>	Epigenetics and Nuclear Signaling
<b>Source</b>	E.coli
<b>Target Names</b>	TTN
<b>Protein Names</b>	Connectin Rhabdomyosarcoma antigen MU-RMS-40.14
<b>Expression Region</b>	14257-14543aa
<b>Notes</b>	Repeated freezing and thawing is not recommended. Store working aliquots at 4°C for up to one week.
<b>Tag Info</b>	N-terminal 10xHis-tagged and C-terminal Myc-tagged
<b>Mol. Weight</b>	36.9 kDa
<b>Protein Length</b>	Partial
<b>Image</b>	



(Tris-Glycine gel) Discontinuous SDS-PAGE (reduced) with 5% enrichment gel and 15% separation gel.

### Reconstitution

We recommend that this vial be briefly centrifuged prior to opening to bring the contents to the bottom. Please reconstitute protein in deionized sterile water to a concentration of 0.1-1.0 mg/mL. We recommend to add 5-50% of glycerol (final concentration) and aliquot for long-term storage at -20°C/-80°C. Our default final concentration of glycerol is 50%. Customers could use it as reference.

### Shelf Life

The shelf life is related to many factors, storage state, buffer ingredients, storage temperature and the stability of the protein itself. Generally, the shelf life of liquid form is 6 months at -20°C/-80°C. The shelf life of lyophilized form is 12 months at -20°C/-80°C.