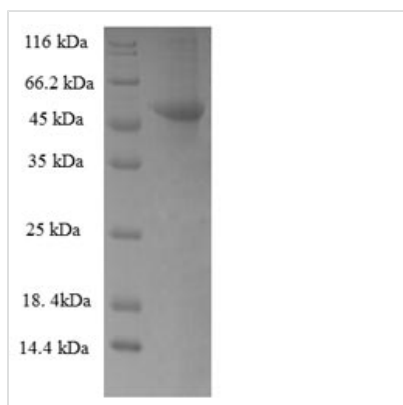




Recombinant Human Ribokinase (RBKS), partial

Product Code	CSB-EP019397HU
Abbreviation	Recombinant Human RBKS protein, partial
Storage	The shelf life is related to many factors, storage state, buffer ingredients, storage temperature and the stability of the protein itself. Generally, the shelf life of liquid form is 6 months at -20°C/-80°C. The shelf life of lyophilized form is 12 months at -20°C/-80°C.
Uniprot No.	Q9H477
Product Type	Recombinant Protein
Immunogen Species	Homo sapiens (Human)
Purity	Greater than 90% as determined by SDS-PAGE.
Sequence	AASGEPQRQWQEEVAAVVVVVGSCMTDLVSLTSRLPKTGETIHGHKFFIGFGG KGANQCVQAARLGAMTSMVCKVGKDSFGNDYIENLKQNDISTEFTYQTKDAA TGTASIIVNNEGQNIIVIVAGANLLLNTEDLRAAANVISRAKVMVCQLEITPATSL EALTMARRSGVKTLFNPAPAIADLDPQFYTLSDVFCCNESEAEILTGLTVGSAA DAGEAALVLLKRGCVVITLGAEGCVVLSQTEPEPKHIPTEKVKAVDTTGAGD SFV GALAFYLAYYPNLSLEDMLNRSNFIAAVSVQAAGTQSSYPYKKDLPLTLF
Research Area	Metabolism
Source	E.coli
Target Names	RBKS
Protein Names	Recommended name: Ribokinase EC= 2.7.1.15
Expression Region	2-322aa
Notes	Repeated freezing and thawing is not recommended. Store working aliquots at 4°C for up to one week.
Tag Info	N-terminal 6xHis-SUMO-tagged
Mol. Weight	50.0kDa
Protein Length	Partial

Image



(Tris-Glycine gel) Discontinuous SDS-PAGE (reduced) with 5% enrichment gel and 15% separation gel.



Reconstitution

We recommend that this vial be briefly centrifuged prior to opening to bring the contents to the bottom. Please reconstitute protein in deionized sterile water to a concentration of 0.1-1.0 mg/mL. We recommend to add 5-50% of glycerol (final concentration) and aliquot for long-term storage at -20°C/-80°C. Our default final concentration of glycerol is 50%. Customers could use it as reference.

Shelf Life

The shelf life is related to many factors, storage state, buffer ingredients, storage temperature and the stability of the protein itself. Generally, the shelf life of liquid form is 6 months at -20°C/-80°C. The shelf life of lyophilized form is 12 months at -20°C/-80°C.