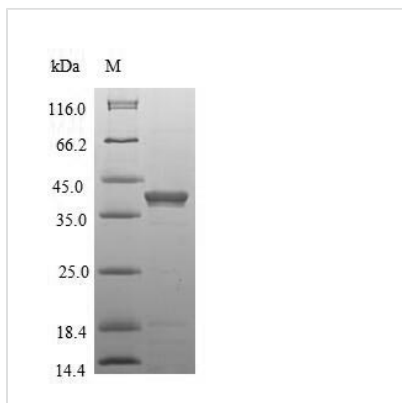




Recombinant Mouse Anthrax toxin receptor 1 (Antxr1), partial

Product Code	CSB-EP001832MO
Relevance	Plays a role in cell attachment and migration. Interacts with Extracellular domain matrix proteins and with the actin cytoskeleton. Mediates adhesion of cells to type 1 collagen and gelatin, reorganization of the actin cytoskeleton and promotes cell spreading. Plays a role in the angiogenic response of cultured umbilical vein endothelial cells
Abbreviation	Recombinant Mouse Antxr1 protein, partial
Storage	The shelf life is related to many factors, storage state, buffer ingredients, storage temperature and the stability of the protein itself. Generally, the shelf life of liquid form is 6 months at -20°C/-80°C. The shelf life of lyophilized form is 12 months at -20°C/-80°C.
Uniprot No.	Q9CZ52
Alias	Tumor endothelial marker 8
Product Type	Recombinant Protein
Immunogen Species	Mus musculus (Mouse)
Purity	Greater than 90% as determined by SDS-PAGE.
Sequence	EDGGPACYGGFDLYFILDKSGSVLHHWNEIYYFVEQLAHRFISPQLRMSFIVFS TRGTTLMKLTEDREQIRQGLEELQKVLPGDYMHEGFERASEQIYYENSQG YRTASVIIALTDGELHEDLFFYSEREANRSRDLGAIYVCVGVKDFNETQLARIAD SKDHVFPVNDGFQALQGGIIHSILKKSCIEILAAEPSTICAGESFQVVVRGNGFRH ARNVDRVLCSEKINDSVTLNEKPFAVEDTYLLCPAPILKEVGMKAALQVSMND GLSFISSSVIITTTTHCSDGS
Research Area	Tags & Cell Markers
Source	E.coli
Target Names	Antxr1
Protein Names	Recommended name: Anthrax toxin receptor 1 Alternative name(s): Tumor endothelial marker 8
Expression Region	31-319aa
Notes	Repeated freezing and thawing is not recommended. Store working aliquots at 4°C for up to one week.
Tag Info	N-terminal 6xHis-tagged
Mol. Weight	36.3kDa
Protein Length	Extracellular Domain
Image	



(Tris-Glycine gel) Discontinuous SDS-PAGE (reduced) with 5% enrichment gel and 15% separation gel.

Reconstitution

We recommend that this vial be briefly centrifuged prior to opening to bring the contents to the bottom. Please reconstitute protein in deionized sterile water to a concentration of 0.1-1.0 mg/mL. We recommend to add 5-50% of glycerol (final concentration) and aliquot for long-term storage at -20°C/-80°C. Our default final concentration of glycerol is 50%. Customers could use it as reference.

Shelf Life

The shelf life is related to many factors, storage state, buffer ingredients, storage temperature and the stability of the protein itself. Generally, the shelf life of liquid form is 6 months at -20°C/-80°C. The shelf life of lyophilized form is 12 months at -20°C/-80°C.