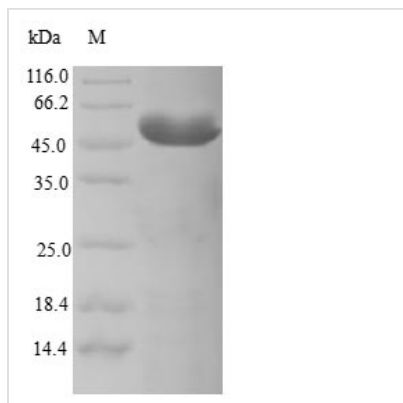




Recombinant Human Centromere protein K (CENPK)

Product Code	CSB-EP005214HU
Relevance	Component of the CENPA-CAD (nucleosome distal) complex, a complex recruited to centromeres which is involved in assembly of kinetochore proteins, mitotic progression and chromosome segregation. May be involved in incorporation of newly synthesized CENPA into centromeres via its interaction with the CENPA-NAC complex. Acts in coordination with CASC5/KNL1 to recruit the NDC80 complex to the outer kinetochore.
Abbreviation	Recombinant Human CENPK protein
Storage	The shelf life is related to many factors, storage state, buffer ingredients, storage temperature and the stability of the protein itself. Generally, the shelf life of liquid form is 6 months at -20°C/-80°C. The shelf life of lyophilized form is 12 months at -20°C/-80°C.
Uniprot No.	Q9BS16
Alias	Interphase centromere complex protein 37 Protein AF-5alpha p33
Product Type	Recombinant Protein
Immunogen Species	Homo sapiens (Human)
Purity	Greater than 90% as determined by SDS-PAGE.
Sequence	MNQEDLDPDSTTDVGDVTNTEEELIRECEEMWKDMEECQNKLSLIGTETLTDS NAQLSLLIMQVKCLTAELSQWQKKTPEIPLTEDVLTGKEEFQKLRQDLEMV LSTKESKNEKLKEDLEREQRWLDEQQQIMESLNVLHSELKNKVETFSERIFN ELKTKMLNIKEYKEKLLSTLGEFLEDHFPLPDRSVKKNKNIQESSVNLITLHEM LEILINRLFDVPHDPYVKISDSFWPPYVELLLRNGIALRHPEDPTRIRLEAFHQ
Research Area	Epigenetics and Nuclear Signaling
Source	E.coli
Target Names	CENPK
Protein Names	Recommended name: Centromere protein K Short name= CENP-K Alternative name(s): Interphase centromere complex protein 37 Protein AF-5alpha p33
Expression Region	1-269aa
Notes	Repeated freezing and thawing is not recommended. Store working aliquots at 4°C for up to one week.
Tag Info	N-terminal GST-tagged
Mol. Weight	58.7kDa
Protein Length	Full Length
Image	



(Tris-Glycine gel) Discontinuous SDS-PAGE (reduced) with 5% enrichment gel and 15% separation gel.

Reconstitution

We recommend that this vial be briefly centrifuged prior to opening to bring the contents to the bottom. Please reconstitute protein in deionized sterile water to a concentration of 0.1-1.0 mg/mL. We recommend to add 5-50% of glycerol (final concentration) and aliquot for long-term storage at -20°C/-80°C. Our default final concentration of glycerol is 50%. Customers could use it as reference.

Shelf Life

The shelf life is related to many factors, storage state, buffer ingredients, storage temperature and the stability of the protein itself. Generally, the shelf life of liquid form is 6 months at -20°C/-80°C. The shelf life of lyophilized form is 12 months at -20°C/-80°C.