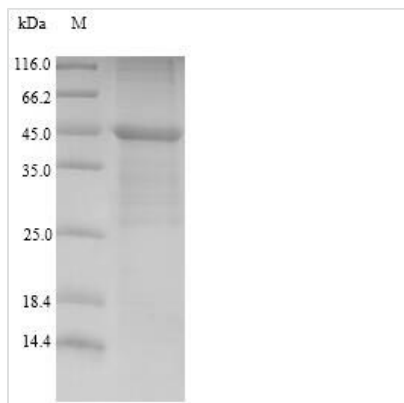




Recombinant Human Lymphocyte antigen 96 (LY96), partial

Product Code	CSB-EP013254HU
Relevance	Binds bacterial lipopolysaccharide (LPS) (PubMed:17803912, PubMed:17569869). Cooperates with TLR4 in the innate immune response to bacterial lipopolysaccharide (LPS), and with TLR2 in the response to cell wall components from Gram-positive and Gram-negative bacteria (PubMed:11160242, PubMed:11593030). Enhances TLR4-dependent activation of NF-kappa-B (PubMed:10359581). Cells expressing both LY96 and TLR4, but not TLR4 alone, respond to LPS (PubMed:10359581).
Abbreviation	Recombinant Human LY96 protein, partial
Storage	The shelf life is related to many factors, storage state, buffer ingredients, storage temperature and the stability of the protein itself. Generally, the shelf life of liquid form is 6 months at -20°C/-80°C. The shelf life of lyophilized form is 12 months at -20°C/-80°C.
Uniprot No.	Q9Y6Y9
Alias	ESOP-1 Protein MD-2
Product Type	Recombinant Protein
Immunogen Species	Homo sapiens (Human)
Purity	≥ 90% as determined by SDS-PAGE.
Sequence	EAQKQYWVCNSSDASISYTYCDKMQYPISINVNPCIELKRSKGLLHIFYIPRRDL KQLYFNLYITVNTMNLPKRKEVICRGSDDDYSFCRALKGETVNTTISFSFKGIK SKGKYKCVVEAISGSPEEMLFCLEFVILHQPNSN
Research Area	Immunology
Source	E.coli
Target Names	LY96
Protein Names	Recommended name: Lymphocyte antigen 96 Short name= Ly-96Alternative name(s): ESOP-1 Protein MD-2
Expression Region	17-160aa
Notes	Repeated freezing and thawing is not recommended. Store working aliquots at 4°C for up to one week.
Tag Info	N-terminal 10xHis-GST-tagged and C-terminal Myc-tagged
Mol. Weight	46.7kDa
Protein Length	Partial
Image	



(Tris-Glycine gel) Discontinuous SDS-PAGE (reduced) with 5% enrichment gel and 15% separation gel.

Reconstitution

We recommend that this vial be briefly centrifuged prior to opening to bring the contents to the bottom. Please reconstitute protein in deionized sterile water to a concentration of 0.1-1.0 mg/mL. We recommend to add 5-50% of glycerol (final concentration) and aliquot for long-term storage at -20°C/-80°C. Our default final concentration of glycerol is 50%. Customers could use it as reference.

Shelf Life

The shelf life is related to many factors, storage state, buffer ingredients, storage temperature and the stability of the protein itself. Generally, the shelf life of liquid form is 6 months at -20°C/-80°C. The shelf life of lyophilized form is 12 months at -20°C/-80°C.