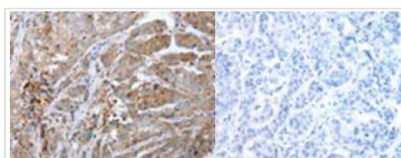




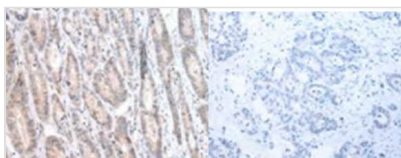
CALB2 antibody

Product Code	CSB-PA004433
Storage	Upon receipt, store at -20°C or -80°C. Avoid repeated freeze.
Uniprot No.	P22676
Immunogen	Synthetic peptide of Human CALB2
Raised In	Rabbit
Species Reactivity	Human
Tested Applications	WB, IHC, ELISA; WB:1:500-1:2000, IHC:1:100-1:300, ELISA:1:20000
Form	Liquid
Conjugate	Non-conjugated
Storage Buffer	-20°C, pH7.4 PBS, 0.05% NaN ₃ , 40% Glycerol
Purification Method	Antigen Affinity purified
Isotype	IgG
Clonality	Polyclonal
Alias	CR; CAL2; CAB29
Immunogen Species	Homo sapiens (Human)
Target Names	CALB2

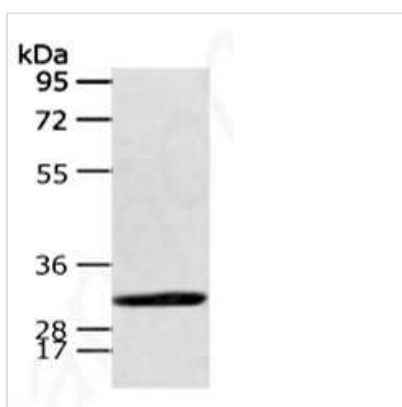
Image



The image on the left is immunohistochemistry of paraffin-embedded Human breast cancer tissue using CALB2 Antibody at dilution 1/25, on the right is treated with synthetic peptide. (Original magnification: x200)



The image on the left is immunohistochemistry of paraffin-embedded Human gastric cancer tissue using CALB2 Antibody at dilution 1/25, on the right is treated with synthetic peptide. (Original magnification: x200)



Gel: 8%SDS-PAGE Lysate: 40µg Lane: Human fetal brain tissue Primary antibody: CALB2 Antibody at dilution 1/400 dilution Secondary antibody: Goat anti rabbit IgG at 1/8000 dilution Exposure time: 40 seconds



Usage

For Research Use Only. Not for use in diagnostic or therapeutic procedures.