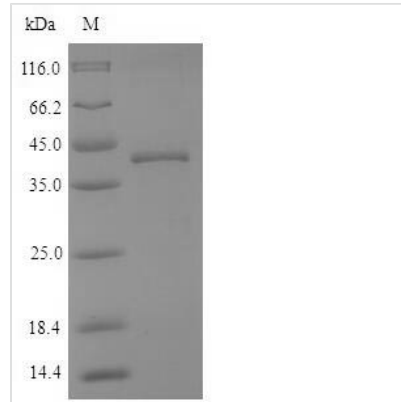




Recombinant Dog Cathepsin K (CTSK)

Product Code	CSB-EP006192DO
Relevance	Closely involved in osteoclastic bone resorption and may participate partially in the disorder of bone remodeling. Displays potent endoprotease activity against fibrinogen at acid pH. May play an important role in Extracellular domain matrix degradation (By similarity).
Abbreviation	Recombinant Dog CTSK protein
Storage	The shelf life is related to many factors, storage state, buffer ingredients, storage temperature and the stability of the protein itself. Generally, the shelf life of liquid form is 6 months at -20°C/-80°C. The shelf life of lyophilized form is 12 months at -20°C/-80°C.
Uniprot No.	Q3ZKN1
Product Type	Recombinant Protein
Immunogen Species	Canis lupus familiaris (Dog) (Canis familiaris)
Purity	≥ 90% as determined by SDS-PAGE.
Sequence	APDSVDYRKKGYVTPVKNQGGCGSCWAFSSVGALEGQLKKKTGKLLNLSPQ NLVDCVSENDGCGGGYMTNAFQYVQKNRGIDSEDAYPYVGGQDESCMYNPTG KAAKCRGYREIPEGNEKALKRAVARVGPISVAIDASLTSFQFYSGVYYDENC NSDNLNHAVLAVGYGIQKGNKHWIKNSWGGENWGNKGYILMARNKNNACGIA NLASFPKM
Research Area	Cardiovascular
Source	E.coli
Target Names	CTSK
Protein Names	Recommended name: Cathepsin K EC= 3.4.22.38
Expression Region	116-330aa
Notes	Repeated freezing and thawing is not recommended. Store working aliquots at 4°C for up to one week.
Tag Info	N-terminal 6xHis-SUMO-tagged
Mol. Weight	39.5kDa
Protein Length	Full Length of Mature Protein
Image	



(Tris-Glycine gel) Discontinuous SDS-PAGE (reduced) with 5% enrichment gel and 15% separation gel.

Reconstitution

We recommend that this vial be briefly centrifuged prior to opening to bring the contents to the bottom. Please reconstitute protein in deionized sterile water to a concentration of 0.1-1.0 mg/mL. We recommend to add 5-50% of glycerol (final concentration) and aliquot for long-term storage at -20°C/-80°C. Our default final concentration of glycerol is 50%. Customers could use it as reference.

Shelf Life

The shelf life is related to many factors, storage state, buffer ingredients, storage temperature and the stability of the protein itself. Generally, the shelf life of liquid form is 6 months at -20°C/-80°C. The shelf life of lyophilized form is 12 months at -20°C/-80°C.