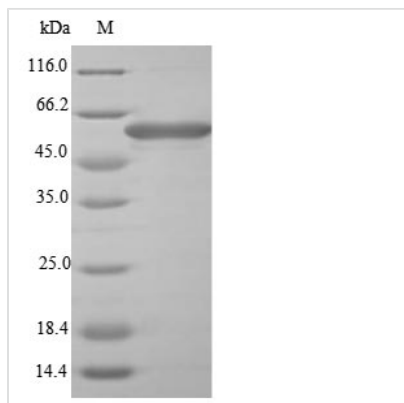


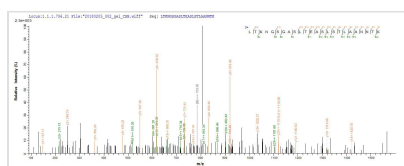


Recombinant Shigella flexneri Flagellin C (fliC)

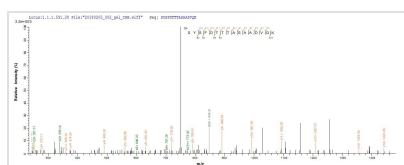
Product Code	CSB-EP600904SZB
Abbreviation	Recombinant Shigella flexneri fliC protein
Storage	The shelf life is related to many factors, storage state, buffer ingredients, storage temperature and the stability of the protein itself. Generally, the shelf life of liquid form is 6 months at -20°C/-80°C. The shelf life of lyophilized form is 12 months at -20°C/-80°C.
Uniprot No.	Q08860
Product Type	Recombinant Protein
Immunogen Species	Shigella flexneri
Purity	Greater than 85% as determined by SDS-PAGE.
Sequence	MAQVINTNSLSLITQNNINKNQSALSSSIERLSSGLRINSKDDAAGQAIANRFT SNIKGLTQAARNANDGISVAQTTEGALSEINNNLQRIRELTVQASTGTNSDSDL DSIQDEIKSRLDEIDRVSGQTQFNGVNVLAKDGS MKIQVGANDGQTITDLKKID SDTLGLNGFNVNGGAVANTAASKADLVAANATVVG NKYTVSAGYDAAKASD LLAGVSDGDTVQATINNGFGTAASATNYKYDSASKSYSFDTTASAADVQKYL TPGVGDTAKGTITIDGSAQDVQISSDGKITASNGDKLYIDTTGRLTKNGSGASL TEASLSTLAANNTKATTIDIGGTSISFTGNSTTPDTITYSVTGAKVDQAAFDKAV STSGNNVDFTTAGYSVNGTTGAVTKGVDSVYVDNNEALTTSDTVDFYLQDDG SVTNGSGKAVYKDADGKLTTDAETKAATTADPLKALDEAISSIDKFRSSLGAVQ NRLDSAVTNLNNTTTTNLSEAQSRIQDADYATEVSNMSKAQIIQQAGNSVLAKA NQVPQQVLSLLQG
Research Area	Immunology
Source	E.coli
Target Names	fliC
Protein Names	Recommended name: Flagellin
Expression Region	1-550aa
Notes	Repeated freezing and thawing is not recommended. Store working aliquots at 4°C for up to one week.
Tag Info	N-terminal 10xHis-tagged
Mol. Weight	62.1 kDa
Protein Length	Full Length
Image	



(Tris-Glycine gel) Discontinuous SDS-PAGE (reduced) with 5% enrichment gel and 15% separation gel.



Based on the SEQUEST from database of E.coli host and target protein, the LC-MS/MS Analysis result of CSB-EP600904SZB could indicate that this peptide derived from E.coli-expressed *Shigella flexneri* fliC.



Based on the SEQUEST from database of E.coli host and target protein, the LC-MS/MS Analysis result of CSB-EP600904SZB could indicate that this peptide derived from E.coli-expressed *Shigella flexneri* fliC.

Reconstitution

We recommend that this vial be briefly centrifuged prior to opening to bring the contents to the bottom. Please reconstitute protein in deionized sterile water to a concentration of 0.1-1.0 mg/mL. We recommend to add 5-50% of glycerol (final concentration) and aliquot for long-term storage at -20°C/-80°C. Our default final concentration of glycerol is 50%. Customers could use it as reference.

Shelf Life

The shelf life is related to many factors, storage state, buffer ingredients, storage temperature and the stability of the protein itself. Generally, the shelf life of liquid form is 6 months at -20°C/-80°C. The shelf life of lyophilized form is 12 months at -20°C/-80°C.