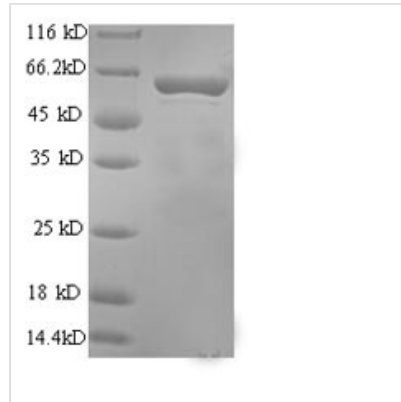




Recombinant Rat Perforin-1 (Prf1), partial

Product Code	CSB-EP018668RA
Relevance	Plays a key role in secretory granule-dependent cell death, and in defense against virus-infected or neoplastic cells. Can insert into the mbrane of target cells in its calcium-bound form, oligomerize and form large pores. Promotes cytolysis and apoptosis of target cells by facilitating the uptake of cytotoxic granzymes.
Abbreviation	Recombinant Rat Prf1 protein, partial
Storage	The shelf life is related to many factors, storage state, buffer ingredients, storage temperature and the stability of the protein itself. Generally, the shelf life of liquid form is 6 months at -20°C/-80°C. The shelf life of lyophilized form is 12 months at -20°C/-80°C.
Uniprot No.	P35763
Alias	Cytolysin;Lymphocyte pore-forming protein
Product Type	Recombinant Protein
Immunogen Species	Rattus norvegicus (Rat)
Purity	≥ 90% as determined by SDS-PAGE.
Sequence	ATRSECKQNHKFPVPGVWAAGEGVDVTTLRSSSFPVNTGKFLRPDRTCTLCK NALMNDGIQRLPVAIAHWRPHGSHCQRNVATTKVSSTEGVAREAAANINNDW RAGLDVNPKEANVHVSVAGSHSKIANFAAEKAHQDQYNFNTDTVECRMYSF RLAQKPLHPDFRKALKNLPHNFNSSTEHA YRRLISSYGTHFITAVDLGGRVSV LTALRTCQLTLDGLTADEVGDCLSVEAQVSIGAAQASVSSEYKACEEKKKQHKIA TSFHQTYRERHVEVLGGPLDSSNDLLFGNQATPEHFSTWIASLPTRPDVVDYS LEPLHILLEDSDPKREALRQAISHYVMSRARWRDCNRPCRAGQHKSSRDSCQ CVCQDSNVTNQDCCPRQRGLAKLMVRNFQAKGLWGDYITSTDAYLKVFFGG QEIRTVVWNNNHPSWSDKMDFGNVLLSTGGPLRVQVWDADNGWDDDLLG TCDKSPKSGFHEVNCPLNHGSIKFIYQANCLPDLTGETCLEYAPQGLLDPRG NRSGAVW
Research Area	Others
Source	E.coli
Target Names	Prf1
Expression Region	25-554aa
Notes	Repeated freezing and thawing is not recommended. Store working aliquots at 4°C for up to one week.
Tag Info	N-terminal 6xHis-tagged
Mol. Weight	62.9kDa
Protein Length	Partial
Image	



(Tris-Glycine gel) Discontinuous SDS-PAGE (reduced) with 5% enrichment gel and 15% separation gel.

Reconstitution

We recommend that this vial be briefly centrifuged prior to opening to bring the contents to the bottom. Please reconstitute protein in deionized sterile water to a concentration of 0.1-1.0 mg/mL. We recommend to add 5-50% of glycerol (final concentration) and aliquot for long-term storage at -20°C/-80°C. Our default final concentration of glycerol is 50%. Customers could use it as reference.

Shelf Life

The shelf life is related to many factors, storage state, buffer ingredients, storage temperature and the stability of the protein itself. Generally, the shelf life of liquid form is 6 months at -20°C/-80°C. The shelf life of lyophilized form is 12 months at -20°C/-80°C.