

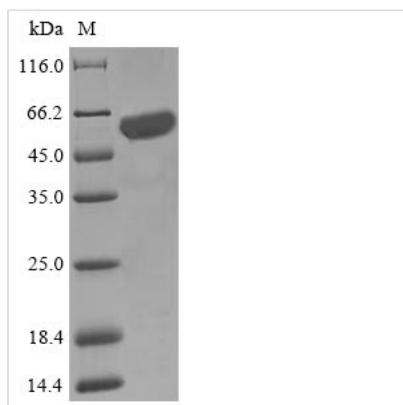


Recombinant Escherichia coli O6:K15:H31 Cysteine desulfurase IscS (iscS)

Product Code	CSB-EP608399EGY
Relevance	Master enzyme that delivers sulfur to a number of partners involved in Fe-S cluster assembly, tRNA modification or cofactor biosynthesis. Catalyzes the removal of elemental sulfur and selenium atoms from cysteine and selenocysteine to produce alanine. Functions as a sulfur delivery protein for Fe-S cluster synthesis onto IscU, an Fe-S scaffold assembly protein, as well as other S acceptor proteins. Also functions as a selenium delivery protein in the pathway for the biosynthesis of selenophosphate.
Abbreviation	Recombinant E.coli O6:K15:H31 ISCS protein
Storage	The shelf life is related to many factors, storage state, buffer ingredients, storage temperature and the stability of the protein itself. Generally, the shelf life of liquid form is 6 months at -20°C/-80°C. The shelf life of lyophilized form is 12 months at -20°C/-80°C.
Uniprot No.	Q0TEV5
Product Type	Recombinant Protein
Immunogen Species	Escherichia coli O6:K15:H31 (strain 536 / UPEC)
Purity	Greater than 85% as determined by SDS-PAGE.
Sequence	MKLPYILDYSATTPVDPRVAEKMMQFMTMDGTFGNPASRSHRFGWQAEAEAV DIARNQIADLVGADPREIVFTSGATESDNLAIKGAANFYQKKGKHIITSKTEHKA VLDTCRQLEREGFEVTYLAPQRNGIIDLKELEAAMRDDTILVSIMHVNNEIGVVQ DIAAIGEMCRARGIIYHVDATQSVGKLPIDLSQLKVDLMSFSGHKIYGPKGIGAL YVRRKPRVRIEAQMHGGGHERGMRSGTLPVHQIVGMGEAYRIAKEEMATEM ERLRGLRNRLWNGIKDIEEVYLNGLDLEHGAPNILNVSFNYVEGESLIMALKDLA VSSGSACTSASLEPSYVLRALGLNDELAHSSIRFSLGRFTTEEEIDYTIELVRKSI GRLRDLSPWEMYKQGVDLNSIEWAHH
Research Area	Signal Transduction
Source	E.coli
Target Names	iscS
Protein Names	Recommended name: Cysteine desulfurase EC= 2.8.1.7
Expression Region	1-404aa
Notes	Repeated freezing and thawing is not recommended. Store working aliquots at 4°C for up to one week.
Tag Info	N-terminal 10xHis-SUMO-tagged and C-terminal Myc-tagged
Mol. Weight	65.1kDa
Protein Length	Full Length



Image



(Tris-Glycine gel) Discontinuous SDS-PAGE (reduced) with 5% enrichment gel and 15% separation gel.

Reconstitution

We recommend that this vial be briefly centrifuged prior to opening to bring the contents to the bottom. Please reconstitute protein in deionized sterile water to a concentration of 0.1-1.0 mg/mL. We recommend to add 5-50% of glycerol (final concentration) and aliquot for long-term storage at -20°C/-80°C. Our default final concentration of glycerol is 50%. Customers could use it as reference.

Shelf Life

The shelf life is related to many factors, storage state, buffer ingredients, storage temperature and the stability of the protein itself. Generally, the shelf life of liquid form is 6 months at -20°C/-80°C. The shelf life of lyophilized form is 12 months at -20°C/-80°C.