

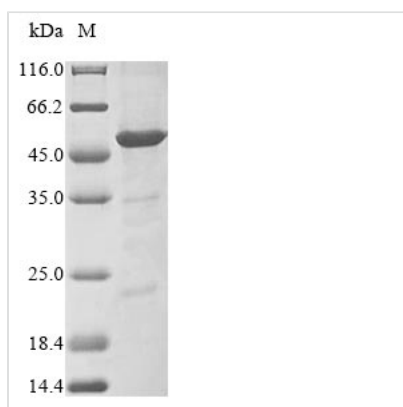


Recombinant Bovine RISC-loading complex subunit TARBP2 (TARBP2)

Product Code	CSB-EP610253BO
Relevance	Required for formation of the RNA induced silencing complex (RISC). Component of the RISC loading complex (RLC), also known as the micro-RNA (miRNA) loading complex (miRLC), which is composed of DICER1, AGO2 and TARBP2. Within the RLC/miRLC, DICER1 and TARBP2 are required to process precursor miRNAs (pre-miRNAs) to mature miRNAs and then load them onto AGO2. AGO2 bound to the mature miRNA constitutes the minimal RISC and may subsequently dissociate from DICER1 and TARBP2. May also play a role in the production of short interfering RNAs (siRNAs) from double-stranded RNA (dsRNA) by DICER1.
Abbreviation	Recombinant Bovine TARBP2 protein
Storage	The shelf life is related to many factors, storage state, buffer ingredients, storage temperature and the stability of the protein itself. Generally, the shelf life of liquid form is 6 months at -20°C/-80°C. The shelf life of lyophilized form is 12 months at -20°C/-80°C.
Uniprot No.	Q0IIG6
Product Type	Recombinant Protein
Immunogen Species	Bos taurus (Bovine)
Purity	≥ 85% as determined by SDS-PAGE.
Sequence	MSEEEQGS GTTTG CGLPSIEQMLAANPGKTPISLLQEY GTRIGKTPVYDLLKAE GQAHQPNFTFRVTVGDT SCTGQGPSKKA AKHKA AEVALKHLKGGSMLEPALE DSSSFSP LDSSLPEDVPVFTA AAAATPVPSAVPTRSSPMEVQPPVSPQQSEC NPV GALQELVVQKGWRLPEYTVTQESGPAHRKEFTMTCRVERFIEIGSGTSKK LAKRNAAAKMLLRVHTVPLDARDGNEAEPEDDHFSIGVGSRLDGLRNRGPGC TWDSL RNSVGEKILSLRSCSLGSLGALGPACCSVLSELSEEQAFHVS YLDIEEL SLSLGCQCLVELSTQPATVCHGSAATREAAARGEAAARRALQYLKIMAGSK
Research Area	Microbiology
Source	E.coli
Target Names	TARBP2
Protein Names	Recommended name: RISC-loading complex subunit TARBP2
Expression Region	1-366aa
Notes	Repeated freezing and thawing is not recommended. Store working aliquots at 4°C for up to one week.
Tag Info	N-terminal 10xHis-tagged and C-terminal Myc-tagged
Mol. Weight	45.8 kDa
Protein Length	Full Length



Image



(Tris-Glycine gel) Discontinuous SDS-PAGE (reduced) with 5% enrichment gel and 15% separation gel.

Reconstitution

We recommend that this vial be briefly centrifuged prior to opening to bring the contents to the bottom. Please reconstitute protein in deionized sterile water to a concentration of 0.1-1.0 mg/mL. We recommend to add 5-50% of glycerol (final concentration) and aliquot for long-term storage at -20°C/-80°C. Our default final concentration of glycerol is 50%. Customers could use it as reference.

Shelf Life

The shelf life is related to many factors, storage state, buffer ingredients, storage temperature and the stability of the protein itself.

Generally, the shelf life of liquid form is 6 months at -20°C/-80°C. The shelf life of lyophilized form is 12 months at -20°C/-80°C.