

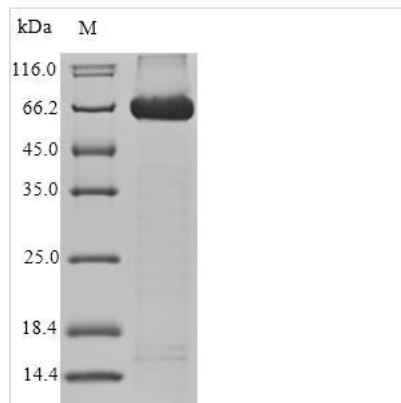


Recombinant Human CD166 antigen (ALCAM), partial

Product Code	CSB-EP614444HU
Relevance	Cell adhesion molecule that mediates both heterotypic cell-cell contacts via its interaction with CD6, as well as homotypic cell-cell contacts. Promotes T-cell activation and proliferation via its interactions with CD6. Contributes to the formation and maturation of the immunological synapse via its interactions with CD6. Mediates homotypic interactions with cells that express ALCAM. Required for normal hematopoietic stem cell engraftment in the bone marrow. Mediates attachment of dendritic cells onto endothelial cells via homotypic interaction. Inhibits endothelial cell migration and promotes endothelial tube formation via homotypic interactions. Required for normal organization of the lymph vessel network. Required for normal hematopoietic stem cell engraftment in the bone marrow. Plays a role in hematopoiesis; required for normal numbers of hematopoietic stem cells in bone marrow. Promotes in vitro osteoblast proliferation and differentiation. Promotes neurite extension, axon growth and axon guidance; axons grow preferentially on surfaces that contain ALCAM. Mediates outgrowth and pathfinding for retinal ganglion cell axons
Abbreviation	Recombinant Human ALCAM protein, partial
Storage	The shelf life is related to many factors, storage state, buffer ingredients, storage temperature and the stability of the protein itself. Generally, the shelf life of liquid form is 6 months at -20°C/-80°C. The shelf life of lyophilized form is 12 months at -20°C/-80°C.
Uniprot No.	Q13740
Alias	Activated leukocyte cell adhesion molecule CD_antigen: CD166
Product Type	Recombinant Protein
Immunogen Species	Homo sapiens (Human)
Purity	Greater than 90% as determined by SDS-PAGE.
Sequence	WYTVNSAYGDTIIIPCRLDVPQNLNMFQKWKYEKPDGSPVFIARFSSSTKKSQY DDVPEYKDRNLNSENYSISNARISDEKRFVCMVLTEDNVFEAPTIVKVKQKQ SKPEIVSKALFLETEQLKGLGDCISEDSYPDGNITWYRNGKVLHPLEGAVVIFK KEMDPVTQLYTMTSTLEYKTTKADIQMPFTCSVTYYGPSGQKTIHSEQAVFDIY YPTEQVTIQVLPKNAIKEGDNITLKCLGNGNPPPEEFLFYLPQQPEGIRSSNTY TLTDVRRNATGDYKCSLIDKKSMASTAITVHYLDLSLNPGEVTRQIGDALPVS CTISASRNATVVWMKDNIRLRSSPSFSSLHYQDAGNYVCETALQEVEGLKKRE SLTLIVEGKPKQIKMTKKTDPGSLSKTIICHVEGFPKPAIQWTITGSGSVINQTEES PYINGRYYSKIISPEENVTLTCTAENQLERTVNSLNVSAISPEHDEADEISD
Research Area	Immunology
Source	E.coli
Target Names	ALCAM



Protein Names	Recommended name: CD166 antigen Alternative name(s): Activated leukocyte cell adhesion molecule CD_antigen= CD166
Expression Region	28-516aa
Notes	Repeated freezing and thawing is not recommended. Store working aliquots at 4°C for up to one week.
Tag Info	N-terminal 6xHis-SUMO-tagged
Mol. Weight	70.8kDa
Protein Length	Partial

Image


(Tris-Glycine gel) Discontinuous SDS-PAGE (reduced) with 5% enrichment gel and 15% separation gel.

Reconstitution	We recommend that this vial be briefly centrifuged prior to opening to bring the contents to the bottom. Please reconstitute protein in deionized sterile water to a concentration of 0.1-1.0 mg/mL. We recommend to add 5-50% of glycerol (final concentration) and aliquot for long-term storage at -20°C/-80°C. Our default final concentration of glycerol is 50%. Customers could use it as reference.
Shelf Life	The shelf life is related to many factors, storage state, buffer ingredients, storage temperature and the stability of the protein itself. Generally, the shelf life of liquid form is 6 months at -20°C/-80°C. The shelf life of lyophilized form is 12 months at -20°C/-80°C.