

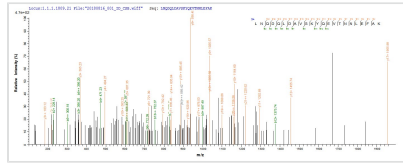


# Recombinant Human Caprin-1 (CAPRIN1)

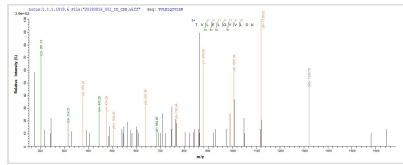
<b>Product Code</b>	CSB-BP614529HU
<b>Abbreviation</b>	Recombinant Human CAPRIN1 protein
<b>Storage</b>	The shelf life is related to many factors, storage state, buffer ingredients, storage temperature and the stability of the protein itself. Generally, the shelf life of liquid form is 6 months at -20°C/-80°C. The shelf life of lyophilized form is 12 months at -20°C/-80°C.
<b>Uniprot No.</b>	Q14444
<b>Storage Buffer</b>	Tris-based buffer,50% glycerol
<b>Product Type</b>	Recombinant Proteins
<b>Immunogen Species</b>	Homo sapiens (Human)
<b>Purity</b>	Greater than 85% as determined by SDS-PAGE.
<b>Sequence</b>	PSATSHSGSGSKSSGPPPPSGSSGSEAAAGAGAAAPASQHPATGTGAVQTE AMKQILGVIDKKLRNLEKKKGKLDYQERMNKGRLNQDQLDAVSKYQEVN NLEFAKELQRSFMALSQDIQKTIKKTARREQLMREEAEQKRLKTVLELQYVLDK LGDDEVRTDLKQGLNGVPILSEEELSLLEDFYKLVDPERDMSLRLNEQYEHASI HLWDLLEGKEKPVCGTTYKVLKEIVERVFQSNYFDSTHNNHQNGLCSEEEEAASA PAVEDQVPEAEPEPAEEYTEQSEVESTEYVNRQFMAETQFTSGEKEQVDEW TVETVEVVNSLQQQPQAASPSVPEPHSLTPVAQADPLVRRQRVQDLMAQMQ GPYNFIQDSMLDFENQTLDPAIVSAQPMNPTQNMDMPQLVCPVHSESRLAQ PNQVPVQPEATQVPLVSSTSEGYTASQPLYQPSHATEQRPQKEPIDQIQATISL NTDQTTASSSLPAASQPQVFQAGTSKPLHSSGINVNAAPFQSMQTVFNMNAP VPPVNEPETLKQQNQYQASYNQSFSSQPHQVEQTELQQEQLQTVVGTYHGS PDQSHQVTGNHQQPPQNTGFPRSNQPYNSRQVSRGSRGARGLMNGY RGPANGFRGGYDGYRPSFSNTPNSGYTQSQFSAPRDYSGYQRDGYQQNFK RGSGQSGPRGAPRGRGGPPRPNRGMPQMNTQQVN
<b>Research Area</b>	Others
<b>Source</b>	Baculovirus
<b>Target Names</b>	CAPRIN1
<b>Protein Names</b>	Recommended name: Caprin-1Alternative name(s): Cell cycle-associated protein 1 Cytoplasmic activation- and proliferation-associated protein 1 GPI-anchored membrane protein 1 GPI-anchored protein p137 Short name= GPI-p137 Sh
<b>Expression Region</b>	2-709aa
<b>Notes</b>	Repeated freezing and thawing is not recommended. Store working aliquots at 4°C for up to one week.
<b>Tag Info</b>	N-terminal 10xHis-tagged
<b>Mol. Weight</b>	80.7 kDa
<b>Protein Length</b>	Full Length of Mature Protein



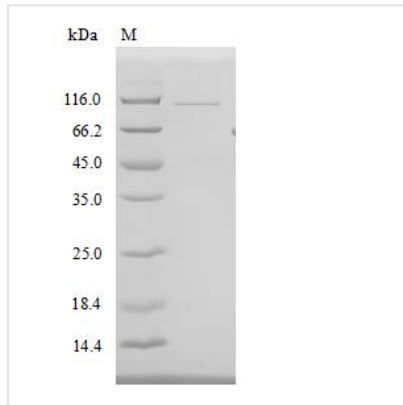
## Image



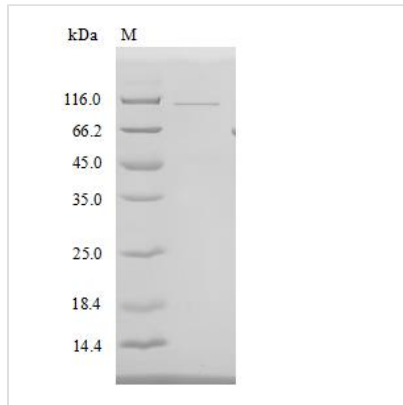
Based on the SEQUEST from database of Baculovirus host and target protein, the LC-MS/MS Analysis result of CSB-BP614529HU could indicate that this peptide derived from Baculovirus-expressed Homo sapiens (Human) CAPRN1.



Based on the SEQUEST from database of Baculovirus host and target protein, the LC-MS/MS Analysis result of CSB-BP614529HU could indicate that this peptide derived from Baculovirus-expressed Homo sapiens (Human) CAPRN1.



(Tris-Glycine gel) Discontinuous SDS-PAGE (reduced) with 5% enrichment gel and 15% separation gel.



(Tris-Glycine gel) Discontinuous SDS-PAGE (reduced) with 5% enrichment gel and 15% separation gel.

## Shelf Life

The shelf life is related to many factors, storage state, buffer ingredients, storage temperature and the stability of the protein itself.

Generally, the shelf life of liquid form is 6 months at -20°C/-80°C. The shelf life of lyophilized form is 12 months at -20°C/-80°C.