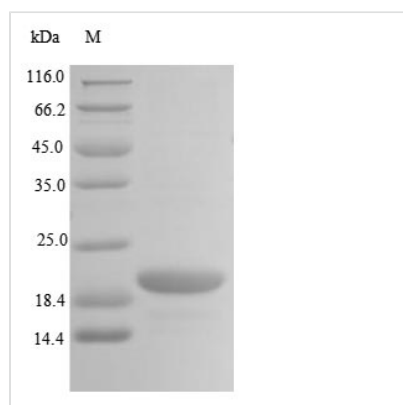




Recombinant Human E3 ubiquitin-protein ligase TRIP12 (TRIP12), partial

Product Code	CSB-EP617924HU
Abbreviation	Recombinant Human TRIP12 protein, partial
Storage	The shelf life is related to many factors, storage state, buffer ingredients, storage temperature and the stability of the protein itself. Generally, the shelf life of liquid form is 6 months at -20°C/-80°C. The shelf life of lyophilized form is 12 months at -20°C/-80°C.
Uniprot No.	Q14669
Product Type	Recombinant Protein
Immunogen Species	Homo sapiens (Human)
Purity	≥ 85% as determined by SDS-PAGE.
Sequence	ECCRPDHGYTHDSRAVKFLFEILSSFDNEQQRLFLQFVTGSPRLPVGGFRSLN PPLTIVRKTFESTENPDDFLPSVMTCVNYLKLDPDYSSIEIMREKLLIAAREGQQS FHLS
Research Area	Epigenetics and Nuclear Signaling
Source	E.coli
Target Names	TRIP12
Protein Names	Recommended name: Probable E3 ubiquitin-protein ligase TRIP12 EC= 6.3.2.- Alternative name(s): Thyroid receptor-interacting protein 12 Short name= TR- interacting protein 12 Short name= TRIP-12
Expression Region	1881-1992aa
Notes	Repeated freezing and thawing is not recommended. Store working aliquots at 4°C for up to one week.
Tag Info	N-terminal 10xHis-tagged and C-terminal Myc-tagged
Mol. Weight	19.9 kDa
Protein Length	Partial

Image



(Tris-Glycine gel) Discontinuous SDS-PAGE (reduced) with 5% enrichment gel and 15% separation gel.



Reconstitution

We recommend that this vial be briefly centrifuged prior to opening to bring the contents to the bottom. Please reconstitute protein in deionized sterile water to a concentration of 0.1-1.0 mg/mL. We recommend to add 5-50% of glycerol (final concentration) and aliquot for long-term storage at -20°C/-80°C. Our default final concentration of glycerol is 50%. Customers could use it as reference.

Shelf Life

The shelf life is related to many factors, storage state, buffer ingredients, storage temperature and the stability of the protein itself. Generally, the shelf life of liquid form is 6 months at -20°C/-80°C. The shelf life of lyophilized form is 12 months at -20°C/-80°C.