

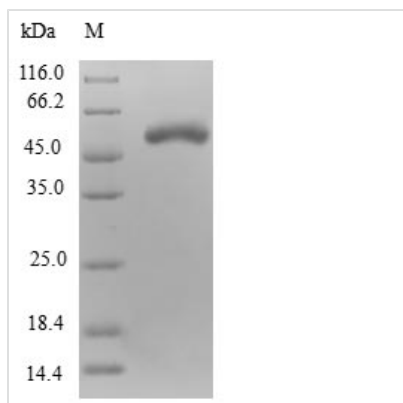


Recombinant Human Nuclear inhibitor of protein phosphatase 1 (PPP1R8)

Product Code	CSB-EP618641HU
Relevance	Inhibitor subunit of the major nuclear protein phosphatase-1 (PP-1). It has RNA-binding activity but does not cleave RNA and may target PP-1 to RNA-associated substrates. May also be involved in pre-mRNA splicing. Binds DNA and might act as a transcriptional repressor. Seems to be required for cell proliferation. Isoform Gamma is a site-specific single-strand endoribonuclease that cleaves single strand RNA 3' to purines and pyrimidines in A+U-rich regions. It generates 5'-phosphate termini at the site of cleavage. This isoform does not inhibit PP-1. May be implicated in mRNA splicing.
Abbreviation	Recombinant Human PPP1R8 protein
Storage	The shelf life is related to many factors, storage state, buffer ingredients, storage temperature and the stability of the protein itself. Generally, the shelf life of liquid form is 6 months at -20°C/-80°C. The shelf life of lyophilized form is 12 months at -20°C/-80°C.
Uniprot No.	Q12972
Alias	Protein phosphatase 1 regulatory inhibitor subunit 8
Product Type	Recombinant Protein
Immunogen Species	Homo sapiens (Human)
Purity	≥ 90% as determined by SDS-PAGE.
Sequence	MGGEDDELKGLLGLPEEETELDNLTFNHTAHNKRISTLTIEEGNLDIQRPKRKR KNSRVTFSEDDDEIINPEDVDPSVGRFRNMVQTAVVPVKKKRVEGPGSLGLEES GSRRMQNFASFSGGLYGGLPPTHSEAGSQPHGIHGHTALIGGLPMPYPNLAPDV DLTPVVPSAVNMNPAPNPAVYNPEAVNEPKKKKYAKEAWPGKKPTPSLLILEN GTHMASSDACHECKSMIAAAG
Research Area	Signal Transduction
Source	E.coli
Target Names	PPP1R8
Protein Names	Recommended name: Nuclear inhibitor of protein phosphatase 1 Short name=NIPP-1Alternative name(s): Protein phosphatase 1 regulatory inhibitor subunit 8 Including the following 1 domains: Activator of RNA decay EC= 3.1.4.-Alternati
Expression Region	1-209aa
Notes	Repeated freezing and thawing is not recommended. Store working aliquots at 4°C for up to one week.
Tag Info	N-terminal GST-tagged
Mol. Weight	52.1kDa

**Protein Length**

Full Length of Isoform 2

Image

(Tris-Glycine gel) Discontinuous SDS-PAGE (reduced) with 5% enrichment gel and 15% separation gel.

Reconstitution

We recommend that this vial be briefly centrifuged prior to opening to bring the contents to the bottom. Please reconstitute protein in deionized sterile water to a concentration of 0.1-1.0 mg/mL. We recommend to add 5-50% of glycerol (final concentration) and aliquot for long-term storage at -20°C/-80°C. Our default final concentration of glycerol is 50%. Customers could use it as reference.

Shelf Life

The shelf life is related to many factors, storage state, buffer ingredients, storage temperature and the stability of the protein itself. Generally, the shelf life of liquid form is 6 months at -20°C/-80°C. The shelf life of lyophilized form is 12 months at -20°C/-80°C.