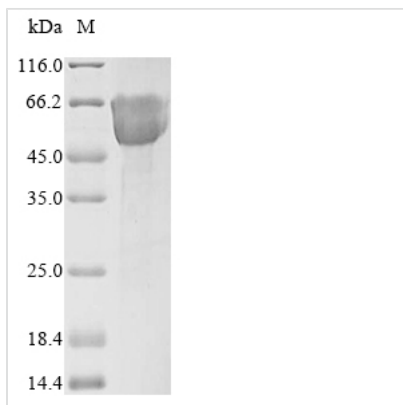


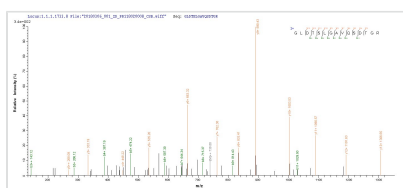


# Recombinant Human Mucosal addressin cell adhesion molecule 1 (MADCAM1), partial

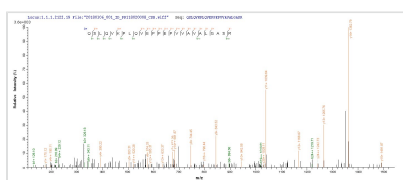
<b>Product Code</b>	CSB-MP618776HU
<b>Relevance</b>	Cell adhesion leukocyte receptor expressed by mucosal venules, helps to direct lymphocyte traffic into mucosal tissues including the Peyer patches and the intestinal lamina propria. It can bind both integrin alpha-4/beta-7 and L-selectin, regulating both the passage and retention of leukocytes. Isoform 2, lacking the mucin-like domain, may be specialized in supporting integrin alpha-4/beta-7-dependent adhesion strengthening, independent of L-selectin binding.
<b>Abbreviation</b>	Recombinant Human MADCAM1 protein, partial
<b>Storage</b>	The shelf life is related to many factors, storage state, buffer ingredients, storage temperature and the stability of the protein itself. Generally, the shelf life of liquid form is 6 months at -20°C/-80°C. The shelf life of lyophilized form is 12 months at -20°C/-80°C.
<b>Uniprot No.</b>	Q13477
<b>Product Type</b>	Recombinant Protein
<b>Immunogen Species</b>	Homo sapiens (Human)
<b>Purity</b>	≥ 85% as determined by SDS-PAGE.
<b>Sequence</b>	QSLQVKPLQVEPPEPVVAVALGASRQLTCRLACADRGASVQWRGLDTSLGAV QSDTGRSVLTVRNASLSAAGTRVCVCGSCGGRTFQHTVQLLVYAFPDQLTVSP AALVPGDPEVACTAHKVTPVDPNALSFSLLVGGQELEGAQALGPEVQEEEEEE PQGDEDVLFVRVTERWRLPPLGTPVPPALYCQATMRLPGLELSHRQAIPVLHSP TSPEPPDTTSPESPDTTSPESPDTTSQEPPDTTSPPEPDKTSPEPAPQQGSTH TPRSPGSTRTRRPEISQAGPTQGEVIPTGSSKPADGQ
<b>Research Area</b>	Immunology
<b>Source</b>	Mammalian cell
<b>Target Names</b>	MADCAM1
<b>Protein Names</b>	Short name: MAdCAM-1 Short name: hMAdCAM-1
<b>Expression Region</b>	19-317aa
<b>Notes</b>	Repeated freezing and thawing is not recommended. Store working aliquots at 4°C for up to one week.
<b>Tag Info</b>	N-terminal 10xHis-tagged
<b>Mol. Weight</b>	34.9 kDa
<b>Protein Length</b>	Extracellular Domain
<b>Image</b>	



(Tris-Glycine gel) Discontinuous SDS-PAGE (reduced) with 5% enrichment gel and 15% separation gel.



Based on the SEQUEST from database of Mammalian Cell host and target protein, the LC-MS/MS Analysis result of CSB-MP618776HU could indicate that this peptide derived from Mammalian Cell-expressed Homo sapiens (Human) MADCAM1.



Based on the SEQUEST from database of Mammalian Cell host and target protein, the LC-MS/MS Analysis result of CSB-MP618776HU could indicate that this peptide derived from Mammalian Cell-expressed Homo sapiens (Human) MADCAM1.

### Reconstitution

We recommend that this vial be briefly centrifuged prior to opening to bring the contents to the bottom. Please reconstitute protein in deionized sterile water to a concentration of 0.1-1.0 mg/mL. We recommend to add 5-50% of glycerol (final concentration) and aliquot for long-term storage at -20°C/-80°C. Our default final concentration of glycerol is 50%. Customers could use it as reference.

### Shelf Life

The shelf life is related to many factors, storage state, buffer ingredients, storage temperature and the stability of the protein itself. Generally, the shelf life of liquid form is 6 months at -20°C/-80°C. The shelf life of lyophilized form is 12 months at -20°C/-80°C.