

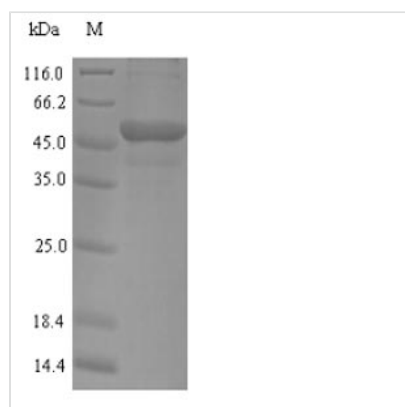


Recombinant Human Myosin-binding protein C, fast-type (MYBPC2), partial

Product Code	CSB-EP618884HU
Relevance	Thick filament-associated protein located in the crossbridge region of vertebrate striated muscle a bands. In vitro it binds MHC, F-actin and native thin filaments, and modifies the activity of actin-activated myosin ATPase. It may modulate muscle contraction or may play a more structural role.
Abbreviation	Recombinant Human MYBPC2 protein, partial
Storage	The shelf life is related to many factors, storage state, buffer ingredients, storage temperature and the stability of the protein itself. Generally, the shelf life of liquid form is 6 months at -20°C/-80°C. The shelf life of lyophilized form is 12 months at -20°C/-80°C.
Uniprot No.	Q14324
Alias	Myosin-binding protein C, fast-type Short name: Fast MyBP-C Alternative name(s): C-protein, skeletal muscle fast isoform
Product Type	Recombinant Protein
Immunogen Species	Homo sapiens (Human)
Purity	Greater than 90% as determined by SDS-PAGE.
Sequence	EPLHLIVEDVTDTTTTTLKWRPPNRIGAGGIDGYLVEYCLEGSEEWVPANTEPVE RCGFTVKNLPTGARILFRVVG VNIAGRSEPATLAQPVTIREIAEPPKIRLPRHLR QTYIRKVG EQLNLVVPFQ GKPRPQV VWTGGAPLDTSRVHVRTSDFDTVFFV RQAARSDSGEYELSVQIENMKDTATIRIRVVEKAGPPINVMVKEVWGTNALVE WQAPKDDGNSEIMGYFVQKADKKTMEWFNVYERNRHTSCTVSDLIVGNEYFF RVYTENICGLSDSPGVSKNTARILKTGITFKPFYKEHDFRMAPKFLTPLIDRVV VAGYSAALNCAVRGHPKPKV VWMKNKMEIREDPKFLITNYQGVLTLNIRRPSP FDAGTYTCRAVNELGEALAECKLEVRVPQ
Research Area	Signal Transduction
Source	E.coli
Target Names	MYBPC2
Protein Names	Recommended name: Myosin-binding protein C, fast-type Short name= Fast MyBP-C Alternative name(s): C-protein, skeletal muscle fast isoform
Expression Region	739-1141aa
Notes	Repeated freezing and thawing is not recommended. Store working aliquots at 4°C for up to one week.
Tag Info	N-terminal 6xHis-tagged
Mol. Weight	49.5kDa
Protein Length	Partial



Image



(Tris-Glycine gel) Discontinuous SDS-PAGE (reduced) with 5% enrichment gel and 15% separation gel.

Reconstitution

We recommend that this vial be briefly centrifuged prior to opening to bring the contents to the bottom. Please reconstitute protein in deionized sterile water to a concentration of 0.1-1.0 mg/mL. We recommend to add 5-50% of glycerol (final concentration) and aliquot for long-term storage at -20°C/-80°C. Our default final concentration of glycerol is 50%. Customers could use it as reference.

Shelf Life

The shelf life is related to many factors, storage state, buffer ingredients, storage temperature and the stability of the protein itself.

Generally, the shelf life of liquid form is 6 months at -20°C/-80°C. The shelf life of lyophilized form is 12 months at -20°C/-80°C.