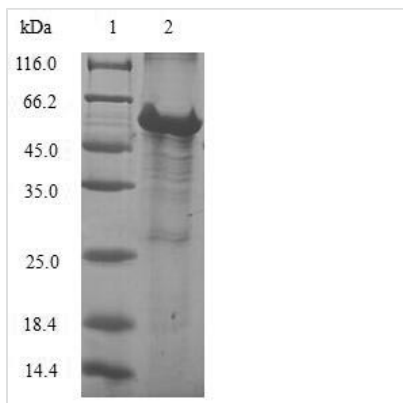




Recombinant Human 39S ribosomal protein L28, mitochondrial (MRPL28)

| | |
|--------------------------|--|
| Product Code | CSB-EP621647HU |
| Abbreviation | Recombinant Human MRPL28 protein |
| Storage | The shelf life is related to many factors, storage state, buffer ingredients, storage temperature and the stability of the protein itself. Generally, the shelf life of liquid form is 6 months at -20°C/-80°C. The shelf life of lyophilized form is 12 months at -20°C/-80°C. |
| Uniprot No. | Q13084 |
| Alias | Melanoma antigen p15 Melanoma-associated antigen recognized by T-lymphocytes |
| Product Type | Recombinant Protein |
| Immunogen Species | Homo sapiens (Human) |
| Purity | ≥ 90% as determined by SDS-PAGE. |
| Sequence | MPLHKYPVWLWKRLQLREGICSR LPGYYLRSLEEERTPTPVHYRPHGAKFKIN PKNGQQRERVEDVPIPIYFPPE SQRGLWGGEGWILGQIYANNDKLSKRLKKVW KPQLFEREFYSEILDKKFTVTVMRTL DLIDEAYGLDFYILKTPKEDLCSKFGMD LKRGM LRLARQDPQLHPEDPERRAAIYDKYKEFAIPEEEAEWVGLTLEEAI EK QRLLEEKDPVPLFKIYVAELIQQLQQQALSEPAVVQKRASGQ |
| Research Area | Epigenetics and Nuclear Signaling |
| Source | E.coli |
| Target Names | MRPL28 |
| Protein Names | Recommended name: 39S ribosomal protein L28, mitochondrial Short name= L28mt Short name= MRP-L28 Alternative name(s): Melanoma antigen p15 Melanoma-associated antigen recognized by T-lymphocytes |
| Expression Region | 1-256aa |
| Notes | Repeated freezing and thawing is not recommended. Store working aliquots at 4°C for up to one week. |
| Tag Info | N-terminal GST-tagged |
| Mol. Weight | 57.2kDa |
| Protein Length | Full Length of BC000990 |
| Image | |



(Tris-Glycine gel) Discontinuous SDS-PAGE (reduced) with 5% enrichment gel and 15% separation gel.

Reconstitution

We recommend that this vial be briefly centrifuged prior to opening to bring the contents to the bottom. Please reconstitute protein in deionized sterile water to a concentration of 0.1-1.0 mg/mL. We recommend to add 5-50% of glycerol (final concentration) and aliquot for long-term storage at -20°C/-80°C. Our default final concentration of glycerol is 50%. Customers could use it as reference.

Shelf Life

The shelf life is related to many factors, storage state, buffer ingredients, storage temperature and the stability of the protein itself. Generally, the shelf life of liquid form is 6 months at -20°C/-80°C. The shelf life of lyophilized form is 12 months at -20°C/-80°C.