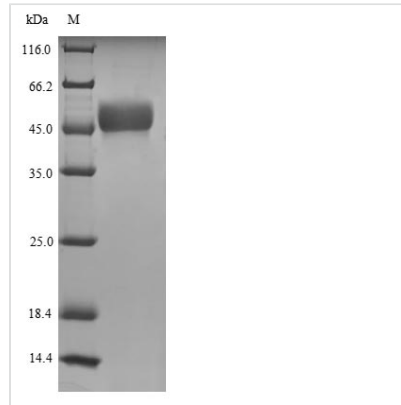


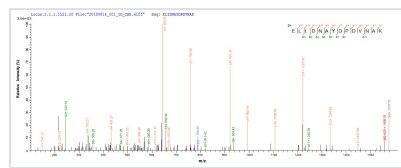


Recombinant Human MORC family CW-type zinc finger protein 3 (MORC3), partial

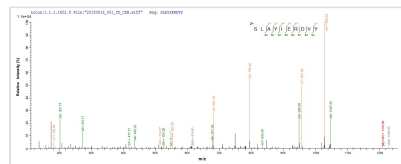
Product Code	CSB-EP622753HU
Relevance	Nuclear factor which forms MORC3-NBs (nuclear bodies) via an ATP-dependent mechanism (PubMed:20501696). Sumoylated MORC3-NBs can also associate with PML-NBs (PubMed:20501696). Recruits TP53 and SP100 to PML-NBs, thus regulating TP53 activity (PubMed:17332504). Binds RNA in vitro (PubMed:11927593). May be required for influenza A transcription during viral infection (PubMed:26202233).
Abbreviation	Recombinant Human MORC3 protein, partial
Storage	The shelf life is related to many factors, storage state, buffer ingredients, storage temperature and the stability of the protein itself. Generally, the shelf life of liquid form is 6 months at -20°C/-80°C. The shelf life of lyophilized form is 12 months at -20°C/-80°C.
Uniprot No.	Q14149
Alias	Nuclear matrix protein 21 Zinc finger CW-type coiled-coil domain protein 3
Product Type	Recombinant Protein
Immunogen Species	Homo sapiens (Human)
Purity	Greater than 90% as determined by SDS-PAGE.
Sequence	MAAQPPRGIRLSALCPKFLHTNSTSHTWPFSAVAELIDNAYDPDVNAKQIWIDK TVINDHICLFTFDNGNGMTSDKHLKMLSFGFSDKVTMNGHVVPVGLYGNGFKS GSMRLGKDAIVFTKNGESMSVGLLSQTYLEVIKAEHVVPVIVAFNKHQRMINLA ESKASLAAILEHSLFSTEQKLLAELDAIIGKKGTRIIWNLRSYKNATEFD FEKDK YDIRIPEDLDEITGKKGYKKQERMDQIAPESDYS LRAYCSILYLKPRMQIILRGQ KVKTQLVSKSLAYIERDVY
Research Area	Others
Source	E.coli
Target Names	MORC3
Protein Names	Recommended name: MORC family CW-type zinc finger protein 3 Alternative name(s): Zinc finger CW-type coiled-coil domain protein 3
Expression Region	1-290aa
Notes	Repeated freezing and thawing is not recommended. Store working aliquots at 4°C for up to one week.
Tag Info	N-terminal 6xHis-SUMO-tagged
Mol. Weight	48.7kDa
Protein Length	Partial
Image	



(Tris-Glycine gel) Discontinuous SDS-PAGE (reduced) with 5% enrichment gel and 15% separation gel.



Based on the SEQUEST from database of E.coli host and target protein, the LC-MS/MS Analysis result of CSB-EP622753HU could indicate that this peptide derived from E.coli-expressed Homo sapiens (Human) MORC3.



Based on the SEQUEST from database of E.coli host and target protein, the LC-MS/MS Analysis result of CSB-EP622753HU could indicate that this peptide derived from E.coli-expressed Homo sapiens (Human) MORC3.

Reconstitution

We recommend that this vial be briefly centrifuged prior to opening to bring the contents to the bottom. Please reconstitute protein in deionized sterile water to a concentration of 0.1-1.0 mg/mL. We recommend to add 5-50% of glycerol (final concentration) and aliquot for long-term storage at -20°C/-80°C. Our default final concentration of glycerol is 50%. Customers could use it as reference.

Shelf Life

The shelf life is related to many factors, storage state, buffer ingredients, storage temperature and the stability of the protein itself.

Generally, the shelf life of liquid form is 6 months at -20°C/-80°C. The shelf life of lyophilized form is 12 months at -20°C/-80°C.