

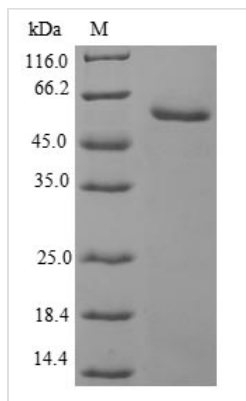


Recombinant Human Ubiquitin-conjugating enzyme E2 S (UBE2S)

Product Code	CSB-EP623095HU
Relevance	Accepts ubiquitin from the E1 complex and catalyzes its covalent attachment to other proteins. Catalyzes 'Lys-11'-linked polyubiquitination. Acts as an essential factor of the anaphase promoting complex/cyclosome (APC/C), a cell cycle-regulated ubiquitin ligase that controls progression through mitosis. Acts by specifically elongating 'Lys-11'-linked polyubiquitin chains initiated by the E2 enzyme UBE2C/UBCH10 on APC/C substrates, enhancing the degradation of APC/C substrates by the proteasome and promoting mitotic exit. Also acts by elongating ubiquitin chains initiated by the E2 enzyme UBE2D1/UBCH5 in vitro; it is however unclear whether UBE2D1/UBCH5 acts as an E2 enzyme for the APC/C in vivo. Also involved in ubiquitination and subsequent degradation of VHL, resulting in an accumulation of HIF1A. In vitro able to promote polyubiquitination using all 7 ubiquitin Lys residues, except 'Lys-48'-linked polyubiquitination.
Abbreviation	Recombinant Human UBE2S protein
Storage	The shelf life is related to many factors, storage state, buffer ingredients, storage temperature and the stability of the protein itself. Generally, the shelf life of liquid form is 6 months at -20°C/-80°C. The shelf life of lyophilized form is 12 months at -20°C/-80°C.
Uniprot No.	Q16763
Alias	E2 ubiquitin-conjugating enzyme S E2-EPF Ubiquitin carrier protein S Ubiquitin-conjugating enzyme E2-24 kDa Ubiquitin-conjugating enzyme E2-EPF5 Ubiquitin-protein ligase S
Product Type	Recombinant Protein
Immunogen Species	Homo sapiens (Human)
Purity	Greater than 90% as determined by SDS-PAGE.
Sequence	MNSNVENLPPHIIRLVYKEVTTLTADPPDGIKVFPNEEDLTDLQVTIEGPEGTPY AGGLFRMKLLLGKDFPASPPKGYFLTKIFHPNVGANGEICVNVLKRDWTAELGI RHVLLTIKCLLIHPNPESALNEEAGRLLLENYEEYAARARLLTEIHGGAGGPGSG RAEAGRALASGTEASSTDPGAPGGPGGAEGPMAKKHAGERDKKLAACKKTD KKRALRRL
Research Area	Epigenetics and Nuclear Signaling
Source	E.coli
Target Names	UBE2S
Protein Names	Recommended name: Ubiquitin-conjugating enzyme E2 S EC= 6.3.2.19 Alternative name(s): E2-EPF Ubiquitin carrier protein S Ubiquitin-conjugating enzyme E2-24 kDa Ubiquitin-conjugating enzyme E2-EPF5 Ubiquitin-protein ligase S



Expression Region	1-222aa
Notes	Repeated freezing and thawing is not recommended. Store working aliquots at 4°C for up to one week.
Tag Info	N-terminal GST-tagged
Mol. Weight	50.8kDa
Protein Length	Full Length

Image


(Tris-Glycine gel) Discontinuous SDS-PAGE (reduced) with 5% enrichment gel and 15% separation gel.

Reconstitution We recommend that this vial be briefly centrifuged prior to opening to bring the contents to the bottom. Please reconstitute protein in deionized sterile water to a concentration of 0.1-1.0 mg/mL. We recommend to add 5-50% of glycerol (final concentration) and aliquot for long-term storage at -20°C/-80°C. Our default final concentration of glycerol is 50%. Customers could use it as reference.

Shelf Life The shelf life is related to many factors, storage state, buffer ingredients, storage temperature and the stability of the protein itself. Generally, the shelf life of liquid form is 6 months at -20°C/-80°C. The shelf life of lyophilized form is 12 months at -20°C/-80°C.