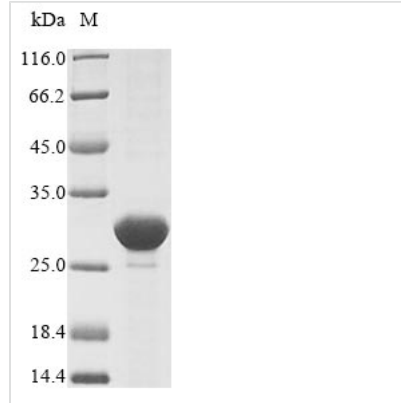


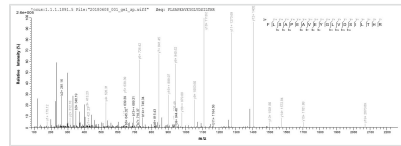


Recombinant Escherichia coli ATP-dependent Clp protease proteolytic subunit (clpP)

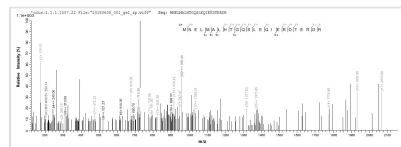
Product Code	CSB-EP630125EGW
Relevance	Cleaves peptides in various proteins in a process that requires ATP hydrolysis. Has a chymotrypsin-like activity. Plays a major role in the degradation of misfolded proteins.
Abbreviation	Recombinant E.coli clpP protein
Storage	The shelf life is related to many factors, storage state, buffer ingredients, storage temperature and the stability of the protein itself. Generally, the shelf life of liquid form is 6 months at -20°C/-80°C. The shelf life of lyophilized form is 12 months at -20°C/-80°C.
Uniprot No.	Q1RF98
Product Type	Recombinant Protein
Immunogen Species	Escherichia coli (strain UTI89 / UPEC)
Purity	≥ 85% as determined by SDS-PAGE.
Sequence	ALVPMVIEQTSRGERSFDIYSRLLKERVIFLTGQVEDHMANLIVAQMLFLEAEN PEKDIYLYINSPGGVITAGMSIYDTMQFIKPDVSTICMGQAASMGAFLLTAGAK GKRFCLPNSRVMIHQPLGGYQGQATDIEIHAREILKVKGRMNELMALHTGQSL EQIERDTERDRFLSAPEAVEYGLVDSILTHRN
Research Area	Metabolism
Source	E.coli
Target Names	clpP
Protein Names	Endopeptidase Clp
Expression Region	15-207aa
Notes	Repeated freezing and thawing is not recommended. Store working aliquots at 4°C for up to one week.
Tag Info	N-terminal 10xHis-tagged and C-terminal Myc-tagged
Mol. Weight	28.6 kDa
Protein Length	Full Length of Mature Protein
Image	



(Tris-Glycine gel) Discontinuous SDS-PAGE (reduced) with 5% enrichment gel and 15% separation gel.



Based on the SEQUEST from database of E.coli host and target protein, the LC-MS/MS Analysis result of CSB-EP630125EGW could indicate that this peptide derived from E.coli-expressed Escherichia coli (strain UTI89 / UPEC) clpP.



Based on the SEQUEST from database of E.coli host and target protein, the LC-MS/MS Analysis result of CSB-EP630125EGW could indicate that this peptide derived from E.coli-expressed Escherichia coli (strain UTI89 / UPEC) clpP.

Reconstitution

We recommend that this vial be briefly centrifuged prior to opening to bring the contents to the bottom. Please reconstitute protein in deionized sterile water to a concentration of 0.1-1.0 mg/mL. We recommend to add 5-50% of glycerol (final concentration) and aliquot for long-term storage at -20°C/-80°C. Our default final concentration of glycerol is 50%. Customers could use it as reference.

Shelf Life

The shelf life is related to many factors, storage state, buffer ingredients, storage temperature and the stability of the protein itself.

Generally, the shelf life of liquid form is 6 months at -20°C/-80°C. The shelf life of lyophilized form is 12 months at -20°C/-80°C.