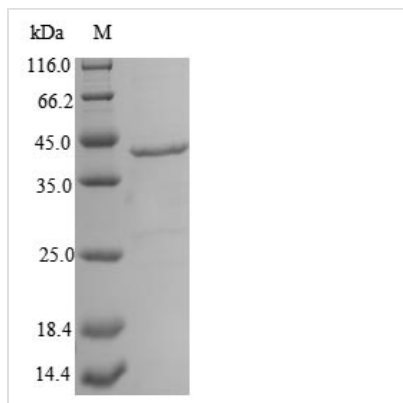




Recombinant Carinoscorpius rotundicauda Limulus clotting factor C, partial

Product Code	CSB-EP638870CDQ
Abbreviation	Recombinant Carinoscorpius rotundicauda Limulus clotting factor C protein, partial
Storage	The shelf life is related to many factors, storage state, buffer ingredients, storage temperature and the stability of the protein itself. Generally, the shelf life of liquid form is 6 months at -20°C/-80°C. The shelf life of lyophilized form is 12 months at -20°C/-80°C.
Uniprot No.	Q26422
Product Type	Recombinant Protein
Immunogen Species	Carinoscorpius rotundicauda (Mangrove horseshoe crab) (Limulus rotundicauda)
Purity	Greater than 85% as determined by SDS-PAGE.
Sequence	SSQPSTVDLASKVKLPEGHYRVGSRAIYTCESRYEYELLGSQGRRCDSNGNWS GRPASCIPVCGRSDSPRSPFIWNGNSTEIGQWPWQAGISRWLADHNMFQFLQ CGGSLLEKWIWVTAHCVTYSATAEIIDPNQFKMYLGKYYRDDSRRDDYVQVR EALIHVNPNYDPGNLNFIDIALIQLKTPVTLTRVQPICLPTDITREHLKEGTLA VVTGWGLNENNTYSETIQQAVLPVVAASTCEEYKEADLPLTVTENMFCAGY KKGRYDACSGDSGGPLVFADDSRTERRWVLEGIVSWGSPSGCGKANQYGG FTKVVNVLFSWIRQFI
Research Area	Others
Source	E.coli
Protein Names	Recommended name: Limulus clotting factor C Short name= FC EC= 3.4.21.84 Cleaved into the following 4 chains: 1. Limulus clotting factor C heavy chain 2. Limulus clotting factor C light chain 3. Limulus clotting factor C chain
Expression Region	691-1019aa
Notes	Repeated freezing and thawing is not recommended. Store working aliquots at 4°C for up to one week.
Tag Info	N-terminal 6xHis-tagged
Mol. Weight	42.2 kDa
Protein Length	Partial
Image	



(Tris-Glycine gel) Discontinuous SDS-PAGE (reduced) with 5% enrichment gel and 15% separation gel.

Reconstitution

We recommend that this vial be briefly centrifuged prior to opening to bring the contents to the bottom. Please reconstitute protein in deionized sterile water to a concentration of 0.1-1.0 mg/mL. We recommend to add 5-50% of glycerol (final concentration) and aliquot for long-term storage at -20°C/-80°C. Our default final concentration of glycerol is 50%. Customers could use it as reference.

Shelf Life

The shelf life is related to many factors, storage state, buffer ingredients, storage temperature and the stability of the protein itself. Generally, the shelf life of liquid form is 6 months at -20°C/-80°C. The shelf life of lyophilized form is 12 months at -20°C/-80°C.