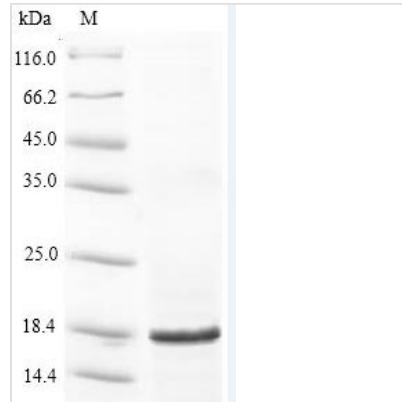




# Recombinant Anaplasma phagocytophilum 50S ribosomal protein L22 (rpIV)

<b>Product Code</b>	CSB-EP641281AAAQ
<b>Relevance</b>	This protein binds specifically to 23S rRNA; its binding is stimulated by other ribosomal proteins, e.g. L4, L17, and L20. It is important during the early stages of 50S assembly. It makes multiple contacts with different domains of the 23S rRNA in the assembled 50S subunit and ribosome. UniRule annotation The globular domain of the protein is located near the polypeptide exit tunnel on the outside of the subunit, while an extended beta-hairpin is found that lines the wall of the exit tunnel in the center of the 70S ribosome.
<b>Abbreviation</b>	Recombinant Anaplasma phagocytophilum rpIV protein
<b>Storage</b>	The shelf life is related to many factors, storage state, buffer ingredients, storage temperature and the stability of the protein itself. Generally, the shelf life of liquid form is 6 months at -20°C/-80°C. The shelf life of lyophilized form is 12 months at -20°C/-80°C.
<b>Uniprot No.</b>	Q2GL54
<b>Product Type</b>	Recombinant Protein
<b>Immunogen Species</b>	Anaplasma phagocytophilum (strain HZ)
<b>Purity</b>	Greater than 90% as determined by SDS-PAGE.
<b>Sequence</b>	MSIVIAAKGLGLRSTPAKLNLVADLIRGKDVAVAAMYLKFCCKKAALLIDKVLKS AIANARANYGVDADNLYVKEVLVGKAFTRLRRVQPRARGRACRISKRYGSVVVK LLER
<b>Research Area</b>	others
<b>Source</b>	E.coli
<b>Target Names</b>	rpIV
<b>Protein Names</b>	Recommended name: 50S ribosomal protein L22
<b>Expression Region</b>	1-112aa
<b>Notes</b>	Repeated freezing and thawing is not recommended. Store working aliquots at 4°C for up to one week.
<b>Tag Info</b>	N-terminal 10xHis-tagged and C-terminal MYC-tagged
<b>Mol. Weight</b>	17.2kDa
<b>Protein Length</b>	Full Length
<b>Image</b>	



(Tris-Glycine gel) Discontinuous SDS-PAGE (reduced) with 5% enrichment gel and 15% separation gel.

### Reconstitution

We recommend that this vial be briefly centrifuged prior to opening to bring the contents to the bottom. Please reconstitute protein in deionized sterile water to a concentration of 0.1-1.0 mg/mL. We recommend to add 5-50% of glycerol (final concentration) and aliquot for long-term storage at -20°C/-80°C. Our default final concentration of glycerol is 50%. Customers could use it as reference.

### Shelf Life

The shelf life is related to many factors, storage state, buffer ingredients, storage temperature and the stability of the protein itself. Generally, the shelf life of liquid form is 6 months at -20°C/-80°C. The shelf life of lyophilized form is 12 months at -20°C/-80°C.