

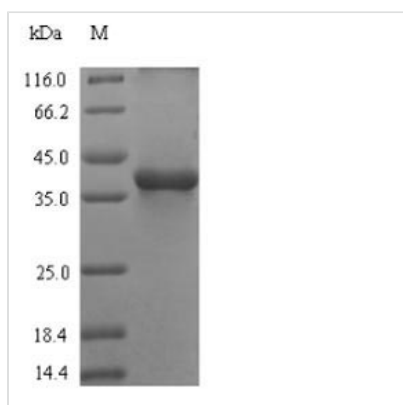


# Recombinant Bovine Complement C3 (C3), partial

<b>Product Code</b>	CSB-EP647263BO
<b>Relevance</b>	C3 plays a central role in the activation of the complement system. Its processing by C3 convertase is the central reaction in both classical and alternative complement pathways. After activation C3b can bind covalently, via its reactive thioester, to cell surface carbohydrates or immune aggregates (By similarity).
<b>Abbreviation</b>	Recombinant Bovine C3 protein, partial
<b>Storage</b>	The shelf life is related to many factors, storage state, buffer ingredients, storage temperature and the stability of the protein itself. Generally, the shelf life of liquid form is 6 months at -20°C/-80°C. The shelf life of lyophilized form is 12 months at -20°C/-80°C.
<b>Uniprot No.</b>	Q2UVX4
<b>Alias</b>	Cleaved into the following 12 chains: Complement C3 beta chain Complement C3 alpha chain C3a anaphylatoxin C3-beta-c Short name: C3bc Acylation stimulating protein Short name: ASP Alternative name(s): C3adesArg Complement C3b alpha' chain Complement C3c alpha' chain fragment 1 Complement C3dg fragment Complement C3g fragment Complement C3d fragment Complement C3f fragment Complement C3c alpha' chain fragment 2
<b>Product Type</b>	Recombinant Protein
<b>Immunogen Species</b>	Bos taurus (Bovine)
<b>Purity</b>	Greater than 90% as determined by SDS-PAGE.
<b>Sequence</b>	SDLDDDIPEEDIISRSQFPESWLWTVIEDLKQADKNGISTKLMNVFLKDSITTW EILAVSLSDKKGICVADPYEVTVMQDFFIDLRLPYSVVRNEQVEIRAILYNYREA ENLKVRVELLYNPAFCSLATAKKRHQQTITIPARSSVAVPYVIVPLKIGLHEVEV KAAVYNHFISDGVKKTLLKVVPEGVRVNKTVAVRTLNPEHLGQ
<b>Research Area</b>	Immunology
<b>Source</b>	E.coli
<b>Target Names</b>	C3
<b>Protein Names</b>	Recommended name: Complement C3 Cleaved into the following 10 chains: 1. Complement C3 beta chain 2. Complement C3 alpha chain 3. C3a anaphylatoxin 4. Complement C3b alpha' chain 5. Complement C3c alpha' chain fragment 1 6. Com
<b>Expression Region</b>	747-953aa
<b>Notes</b>	Repeated freezing and thawing is not recommended. Store working aliquots at 4°C for up to one week.
<b>Tag Info</b>	N-terminal 6xHis-SUMO-tagged
<b>Mol. Weight</b>	39.5kDa
<b>Protein Length</b>	Partial



## Image



(Tris-Glycine gel) Discontinuous SDS-PAGE (reduced) with 5% enrichment gel and 15% separation gel.

## Reconstitution

We recommend that this vial be briefly centrifuged prior to opening to bring the contents to the bottom. Please reconstitute protein in deionized sterile water to a concentration of 0.1-1.0 mg/mL. We recommend to add 5-50% of glycerol (final concentration) and aliquot for long-term storage at -20°C/-80°C. Our default final concentration of glycerol is 50%. Customers could use it as reference.

## Shelf Life

The shelf life is related to many factors, storage state, buffer ingredients, storage temperature and the stability of the protein itself.

Generally, the shelf life of liquid form is 6 months at -20°C/-80°C. The shelf life of lyophilized form is 12 months at -20°C/-80°C.