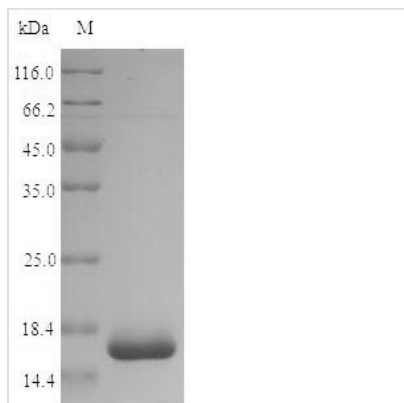




Recombinant Shigella dysenteriae serotype 1 60 kDa chaperonin (groL), partial

Product Code	CSB-EP656857SGF
Relevance	Prevents misfolding and promotes the refolding and proper assembly of unfolded polypeptides generated under stress conditions
Abbreviation	Recombinant Shigella dysenteriae serotype 1 groL protein, partial
Storage	The shelf life is related to many factors, storage state, buffer ingredients, storage temperature and the stability of the protein itself. Generally, the shelf life of liquid form is 6 months at -20°C/-80°C. The shelf life of lyophilized form is 12 months at -20°C/-80°C.
Uniprot No.	Q328C4
Alias	GroEL protein? Protein Cpn60
Product Type	Recombinant Protein
Immunogen Species	Shigella dysenteriae serotype 1 (strain Sd197)
Purity	≥ 90% as determined by SDS-PAGE.
Sequence	TEGLKAVAAGMNPMDLKRKIDKAVTAAVEELKALSVPCSDSKAIAQVGTISANS DETVGKLI AEAMDKVKGEGVITVEDGTGLQDEL DVVEGMQFDRGYLSPYFINK PETGAVELESPFILLADKKISNIREMLPVLEAVAKAGKPLLLIAEDVEGEALATLV VNTMRGIVKVA AVKAPGFGDRRKAMLQDIATLTGGTVISEEIGMELEKATLEDL GQAKR VVINKDTTTIIDGVGEEAAIQGRVAQIRQQIEEATSDYDREKLQERVAKL AGGVAVIKVGAATEVEMKEKKARVEDALHATRAAVEEGVVAGGGVALIRVASK LADLRGQNEDQNVGIKVALRAMEAPLRQIVLNCGEEPSVVANTVKGGDGNYG YNAATEEYGNMIDMGILDPTKVTRSALQYAASVAGL MITTECMVTDLPKNDAA DLGAAGGMGGMGGMGGMM
Research Area	Microbiology
Source	E.coli
Target Names	groL
Protein Names	Recommended name: 60 kDa chaperonin Alternative name(s): GroEL protein Protein Cpn60
Expression Region	101-548
Notes	Repeated freezing and thawing is not recommended. Store working aliquots at 4°C for up to one week.
Tag Info	N-terminal 10xHis-SUMO-tagged and C-terminal Myc-tagged
Mol. Weight	66.9kDa
Protein Length	Partial
Image	



(Tris-Glycine gel) Discontinuous SDS-PAGE (reduced) with 5% enrichment gel and 15% separation gel.

Reconstitution

We recommend that this vial be briefly centrifuged prior to opening to bring the contents to the bottom. Please reconstitute protein in deionized sterile water to a concentration of 0.1-1.0 mg/mL. We recommend to add 5-50% of glycerol (final concentration) and aliquot for long-term storage at -20°C/-80°C. Our default final concentration of glycerol is 50%. Customers could use it as reference.

Shelf Life

The shelf life is related to many factors, storage state, buffer ingredients, storage temperature and the stability of the protein itself. Generally, the shelf life of liquid form is 6 months at -20°C/-80°C. The shelf life of lyophilized form is 12 months at -20°C/-80°C.