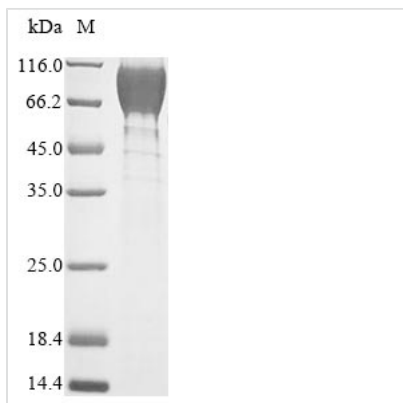




Recombinant Mouse Heat-stable enterotoxin receptor (Gucy2c), partial

Product Code	CSB-MP664972MO
Relevance	Receptor for the E.coli heat-stable enterotoxin (E.coli enterotoxin markedly stimulates the accumulation of cGMP in mammalian cells expressing GC-C). Also activated by the endogenous peptide guanylin.
Abbreviation	Recombinant Mouse Gucy2c protein, partial
Storage	The shelf life is related to many factors, storage state, buffer ingredients, storage temperature and the stability of the protein itself. Generally, the shelf life of liquid form is 6 months at -20°C/-80°C. The shelf life of lyophilized form is 12 months at -20°C/-80°C.
Uniprot No.	Q3UWA6
Product Type	Recombinant Protein
Immunogen Species	Mus musculus (Mouse)
Purity	≥ 85% as determined by SDS-PAGE.
Sequence	VFWASQVRQNCRNGSYEISVLMMDNSAYKEPMQNLREAVEEGLDIVRKRLRE ADLNVTVNATFIYS DGLIHKSGDCRSSTCEGLDLLREITRDHKMGCALMGPSC TYSTFQMYLDTELNYPMISAGSYGLSCDYKETLTRILPPARKLMYFLVDFWKVN NASFKPFSWNSSYVYKNGSEPEDCFWYLNALAEAGVSYFSEVLNFKDVLRRSE QFQEILTGHNRKSNVIVMCGTPESFYDVKGDLQVAEDTVVILVDLFSNHYFEEN TTAPEYMDNVLVLTLPSEQSTSNTSVAERFSSGRSDFSLAYLEGTLFFGHMLQ TFLENGENVGTGPKFARAFRNLTQGFAGPVTLDSDGDIDNIMSLLYVSLDTRKY KVLWKYDTHKNKTIPVAENPNFIWKNHKL PNDVPGLGPQILM
Research Area	Microbiology
Source	Mammalian cell
Target Names	Gucy2c
Protein Names	Guanylyl cyclase C (GC-C) (Intestinal guanylate cyclase) (Guc2c)
Expression Region	20-433aa
Notes	Repeated freezing and thawing is not recommended. Store working aliquots at 4°C for up to one week.
Tag Info	N-terminal 10xHis-tagged and C-terminal Myc-tagged
Mol. Weight	52.1 kDa
Protein Length	Extracellular Domain
Image	



(Tris-Glycine gel) Discontinuous SDS-PAGE (reduced) with 5% enrichment gel and 15% separation gel.

Reconstitution

We recommend that this vial be briefly centrifuged prior to opening to bring the contents to the bottom. Please reconstitute protein in deionized sterile water to a concentration of 0.1-1.0 mg/mL. We recommend to add 5-50% of glycerol (final concentration) and aliquot for long-term storage at -20°C/-80°C. Our default final concentration of glycerol is 50%. Customers could use it as reference.

Shelf Life

The shelf life is related to many factors, storage state, buffer ingredients, storage temperature and the stability of the protein itself. Generally, the shelf life of liquid form is 6 months at -20°C/-80°C. The shelf life of lyophilized form is 12 months at -20°C/-80°C.