

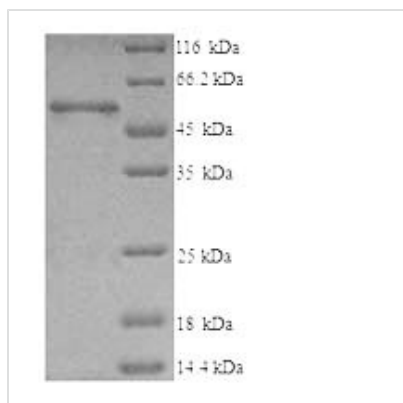


Recombinant Human T-complex protein 1 subunit beta (CCT2)

Product Code	CSB-YP004856HU
Relevance	Molecular chaperone; assists the folding of proteins upon ATP hydrolysis. As part of the BBS/CCT complex may play a role in the assembly of BBSome, a complex involved in ciliogenesis regulating transports vesicles to the cilia. Known to play a role, in vitro, in the folding of actin and tubulin.
Abbreviation	Recombinant Human CCT2 protein
Storage	The shelf life is related to many factors, storage state, buffer ingredients, storage temperature and the stability of the protein itself. Generally, the shelf life of liquid form is 6 months at -20°C/-80°C. The shelf life of lyophilized form is 12 months at -20°C/-80°C.
Uniprot No.	P78371
Alias	CCT-beta
Product Type	Recombinant Protein
Immunogen Species	Homo sapiens (Human)
Purity	≥ 90% as determined by SDS-PAGE.
Sequence	ASLSLAPVNIKAGADEERAETARLTSFIGAIAIGDLVKSTLGPKGMDKILLSSGR DASLMVTNDGATILKNIGVDNPAKVLVDMSRVQDDEVGDGTTSVTVLAAELL REAESLIAKKIHPQTIIAGWREATKAAREALLSSAVDHGSDEVKFRQDLMNIAG TTLSSKLLTHHKDHFTKLAVEAVLRLKGSNLEAIHIIKKLGGSLADSYLDEGFLL DKKIGVNPQKRIENAKILIANGTGMDTDKIKIFGSRVVDSTAKVAEIEHAEKEKM KEKVERILKHGINCFINRQLIYNYPEQLFGAAGVMAIEHADDFAGVERLALVTGGE IASTFDHPELVKLGSCKLIEEVMIGEDKLIHFSGVALGEACTIVLRGATQQILDEA ERSLHDALCVLAQTVKDSRTVYGGGCSEMLMAHAVTQLANRTPGKEAVAME SYAKALRMLPTIIADNAGYDSADLVAQLRAAHSEGNTTAGLDMREGTIGDMAIL GITESFQVKRQVLLSAAEAAEVILRVDNIIKAAPRKRVPDHHPC
Research Area	Signal Transduction
Source	Yeast
Target Names	CCT2
Protein Names	Recommended name: T-complex protein 1 subunit beta Short name= TCP-1-beta Alternative name(s): CCT-beta
Expression Region	2-535aa
Notes	Repeated freezing and thawing is not recommended. Store working aliquots at 4°C for up to one week.
Tag Info	N-terminal 6xHis-tagged
Mol. Weight	59.4kDa

**Protein Length**

Full Length of Mature Protein

Image

(Tris-Glycine gel) Discontinuous SDS-PAGE (reduced) with 5% enrichment gel and 15% separation gel.

Reconstitution

We recommend that this vial be briefly centrifuged prior to opening to bring the contents to the bottom. Please reconstitute protein in deionized sterile water to a concentration of 0.1-1.0 mg/mL. We recommend to add 5-50% of glycerol (final concentration) and aliquot for long-term storage at -20°C/-80°C. Our default final concentration of glycerol is 50%. Customers could use it as reference.

Shelf Life

The shelf life is related to many factors, storage state, buffer ingredients, storage temperature and the stability of the protein itself. Generally, the shelf life of liquid form is 6 months at -20°C/-80°C. The shelf life of lyophilized form is 12 months at -20°C/-80°C.